

---

**Free** guide to  
Suffolk Artists' Open Studios

Suffolk  
**OPEN STUDIOS**



**2018**  
Directory

---

An Essential guide to locate Artists  
Studios during the first 4 weekends  
in June. Plus more!

[www.suffolkopenstudios.org](http://www.suffolkopenstudios.org)

---

# Contents

View from the Chair	3
Art About Town	4
Artists Trails	7
Artists Hubs	8
Members' Exhibitions	9
Artists' Index	10
Open Studio Event	13
<b>St Edmundsbury Artists</b>	<b>14</b>
<b>Forest Green Artists</b>	<b>18</b>
<b>Mid-Suffolk Artists</b>	<b>20</b>
<b>Babergh Artists</b>	<b>30</b>
<b>Ipswich Artists</b>	<b>42</b>
<b>Suffolk Coastal Artists</b>	<b>46</b>
<b>Waveney Artists</b>	<b>62</b>
<b>Galleries</b>	<b>68</b>
Associate Members	69
Committee 2018 / SOS Area Leaders	70
Join Us	71

Cover image courtesy of Belinda King

Suffolk  
Open Studios



[www.suffolkopenstudios.org](http://www.suffolkopenstudios.org)

[www.facebook.com/suffolkopenstudios](https://www.facebook.com/suffolkopenstudios)

[www.twitter.com/suffopenstudios](https://www.twitter.com/suffopenstudios)

## View from the Chair



In June you are welcome to browse the Artists' studios and witness them at work. Suffolk Open Studios is an opportunity to interact with the diverse talents in our county; as Suffolk is a wide area some Artists create trails to help you find studios near to each other - you can find these in the directory or on the website.

Rarely do you get the opportunity to see inside the studios of working Artists'. It still amazes me that, among the wonderful array of talents in our county; you will have the opportunity to visit the studios of Oil Painters,

Collage Artists, Textile Artists, Jewellery makers, Ceramics Artists as well as Glass and Mosaics Artists. All look forward to sharing their methods and inspirations with visitors.

Many of our Artists work from a residential location and it is the chance for the enthusiast to see how working in a studio in the garden is a rich and fulfilling experience. Each artist will have signs and directions outside their property; follow these directions and it will lead you to a world of creativity and inspiration.

Studios will be open on 2<sup>nd</sup>, 3<sup>rd</sup>, 9<sup>th</sup>, 10<sup>th</sup>, 16<sup>th</sup>, 17<sup>th</sup>, 23<sup>rd</sup> and 24<sup>th</sup> of June. Use your Directory to help you find your way and check in with the website for updates of events during this time. You can follow us on Twitter or Facebook. Individual Artists may have demonstrations so look out for updates on the timings of these.

I wish you all an exciting June and enjoy the Artists at work. Suffolk Artists will have their work for sale and some offer courses throughout the year, this really is a great opportunity if you have an interest in Art to get to know likeminded people and begin or stretch the Artist in you.

**Cally James**

Chair of Suffolk Open Studios

**"To be an Artist is to believe in life" ~ Henry Moore**

# Art About Town

**Monday 21<sup>st</sup> May - Friday 1<sup>st</sup> June 2018**

**Art About Town** brings together local businesses and Suffolk Open Studios artists' work being exhibited within the business premises. This gives you the opportunity for a sneak preview of members' work before they open their studios to the public in June.

During normal opening hours you can visit the various locations listed below, pick up a directory and view some of the artists work.

## BARDWELL

### Bardwell Windmill

Bardwell Windmill  
Scholl Lane  
Bardwell  
Bury St. Edmunds IP31 1AD  
Tel: 01359 251331

### Liesel Lawrence

Ceramics

## BURY ST EDMUNDS

### Fatface Ltd.

5-7 Auction Street  
The Arc  
Bury St. Edmunds IP33 3FA  
Tel: 01284 764247

### Ruth Simpson

Mixed media

### The Handmade Shop and Gallery

77 St. John's Street  
Bury St. Edmunds IP33 1SQ

### Lucy Perry

Paintings and prints

### Wendy Theobald

Wildlife illustration

## CAMPSEA ASHE

### Easterling Room

Station House  
(Wickham Market train station)  
Station Road  
Campsea Ashe  
Suffolk IP13 0PT

### Allan Williams

Paintings and Giclee prints

# Art About Town

## FELIXSTOWE

### Coes Menswear

46 Hamilton Road  
Felixstowe IP11 7AN  
Tel: 01394 282414

### Mary Wyatt

Ceramics

## GREAT WHELNETHAM

### Colne Stoves

Overland Business Park  
Sudbury Road  
Bury St. Edmunds IP30 0UL  
Tel: 07412 269428

### Claire Weeks

Watercolour and  
acrylic paintings

### Hennessey Lifestyle

Overland Business Park  
Sudbury Road  
Bury St. Edmunds IP30 0UL  
Tel: 01284 386015

### Lucy Perry

Paintings and prints

## IPSWICH

### Ipswich Borough Council

Grafton House Reception  
Russell Road  
Ipswich IP1 2DE  
Tel: 01472 432008

### KGreene Pottery

Ceramics

### Avenue Theatre, Red Rose Chain

Gippeswyk Hall  
Gippeswyk Avenue  
Ipswich IP2 9AF  
Tel: 01473 603388

### Allan Williams

Paintings and Giclee prints

## LAVENHAM

### Blue Magpie Studio

72 Water Street  
Lavenham CO10 9RW  
Tel: 07788 508520

### Lucy Perry

Paintings and prints

## Art About Town

### PAKENHAM

#### Pakenham Water Mill

Mill Road  
Pakenham  
Bury St. Edmunds IP31 2NB  
Tel: 01359 230275

#### Liesel Lawrence

Ceramics

### RENDELESHAM

#### The Diner at Bentwaters

Building 126  
Bentwaters Park  
Rendlesham  
Woodbridge IP12 2TW  
Tel: 01394 420442

#### Toby Mayhew

**& Lisa Berry**  
Acrylic and oil paintings

### SHOTLEY GATE

#### The Shipwreck Bar

Shortly Marina  
Shortly Gate IP9 1QJ  
TEL: 01473 788865

#### Nick Carter

Pen & ink drawings,  
acrylic paintings

### SUDBURY

#### Waitrose Cafe

Station Road  
Sudbury CO10 2SS  
Tel: 01787 880373

#### Lucy Perry

Acrylic paintings

#### Claire Weeks

Watercolour and acrylic paintings

*"One of the best things about Open Studios is having an array of people from different backgrounds come through my studio door. I try to let people look first with out intruding but I love to share my practice with them all. I value the insights of everyone - artists, art lovers and sceptics alike"*

**Rebecca Guyver**

*"Don't be embarrassed to walk out of a studio with nothing in your hand, but leave it with something in your head".*

**Sara MacIver**

## Artist Trails

This year there are nine Artist Trails around the county. Trails are a way in which artists collaborate to enhance visitor experience. Here the artists will open their studios for the same weekend/s and provide easy to follow maps (downloadable from the website), so that visitors can move comfortably from one artist to the next.

Trails include:

**Artists Around Framlingham** (see page 47)

**Artists Around Sudbury** (see page 35)

**Beyton and Hessett Art Trail** (see page 27)

**Felixstowe Trail** (see page 53)

**Heart of Suffolk** (see page 25)

**Ipswich Trail** (see page 45)

**Sandling 5 Trail** (see page 50)

**Sandling 8 Trail** (see page 58)

**Shotley Peninsula Trail** (see page 37)



Artwork courtesy of Belinda King

## Artists' Hubs

In addition to individual artists' Open Studios, Hubs involve Suffolk Open Studios members getting together at one location to show visitors their artwork in progress and completed pieces of their work. Sometimes the group of artists will share common interests and exhibiting their work together enriches the visitor's experience. Sometimes the artists' own studios are in remote locations and it reduces visitor travel time if they collaborate in this way. Visitors to a hub will enjoy great variety and talent all in one place.

This year there are the following Hub studios:

### Heart of Suffolk Hub, Bury St Edmunds (see page 25)

Set in and around Emma Buckmaster's studio, is a chance to see a few pieces of work by each of the artist on Five Artists in the Heart of Suffolk trail. Our trail runs the following weekend. We'd love to see you at either or both open studio events.

**Artist:** Emma Buckmaster, Rebecca Moss Guyver, Lucy Perry, Lucy Redman & Annabel Ridley.

**Dates:** Open for the weekend 2/3 June 2018

**Location:** Moores Farm Studio, Felsham, Bury St Edmunds IP30 0PU

Take the Brettenham Rd from Felsham and after a mile turn left onto By-road. The studio is 1/4 mile along the lane next to a yellow thatched farmhouse.

### Inspired Art at Wingfield Barns, Stradbroke (see page 29)

The newly formed group of seven will be exhibiting throughout June in the light-filled galleries at the beautiful Wingfield Barns. See their varied and vibrant work any weekend or Tuesday during the Suffolk Open Studios month. Altogether an exciting and not to be missed exhibition.

**Artist:** John Parker, Boo Compton, Lou Chapman, Sue Clarke, Sara MaCiver, Diana Kearsley & Diana Chapman.

**Dates:** 2/3 June, 9/10 June, 16/17 June, 23/24 June & 30 June /1 July to coincide with the Wingfield Village Fete on Saturday. Also all four Tuesdays in June.

**Location:** Wingfield Barns, Church Road, Wingfield, Suffolk IP21 5RA

The Barns complex on Church Road Wingfield is signposted off the B1118 between Stradbroke and Hoxne on the Suffolk Norfolk border, not far from Diss. Postcode IP21 5RA.

## Members Exhibitions

### Suffolk Open Studios Exhibition

Offering a taster of what you might see when taking part in the Suffolk Open Studios tour.

**The Apex Charter Square, Bury St Edmunds IP33 3FD**  
**Tues 16 May - Sun 26 June**

### Allan Williams at Station House

Allan Williams will be displaying a selection of his artwork at this inaugural exhibition in the Easterling Room, Station House (Wickham Market train station).

**Easterling Room, Station Road, Campsea Ashe, Suffolk IP13 0PT**  
**27 - 31 May 2018**

**Open Monday - Friday 6am - 6pm**

**Saturday - Friday 6.30am - 6pm**

**Sunday - Friday 8:30am - 6pm**

Easterling room is subject to occasional bookings:  
Ring: 07856 810828 to check availability.

Additional parking available at church car park opposite  
www.stationhousecampseaa Ashe.co.uk

### Heart of Suffolk Winter Exhibition

Winter exhibition of artists in the Heart of Suffolk plus guests showing fine art, ceramics and cards with pop up cafe and prize draw to benefit Suffolk Artlink. Artists' including Rebecca Guyver, Lucy Perry, Emma Buckmaster, Annabel Ridley, Lucy Redman, Cally James, Dominica Yannaghas, Sue Arnold & Louise Chapman.

**Thorpe Morieux Village Hall, Bury Road, Thorpe Morieux Suffolk IP30 0NR**  
**17 - 18 November 2018**

**Open daily 10 - 4pm**

**Private View Friday 16 November 7 - 9pm**

Contact Rebecca Moss Guyver, tel: 01449 673 549  
or email: rebecca.guyver@btconnect.com

### Suffolk Living June Group Exhibition

A group of Suffolk Coastal artists exhibiting throughout June in addition to their Open Studios.

Ali Hollingsworth, Lisa Berry, Toby Mahew and Rebecca Guyver  
**Suffolk Living, 12 Orwell Road, Felixstowe IP11 7AD**  
**1 - 30 June 2018**

**Open Tuesday - Saturday 11am - 5pm**

**Private View 4 June 1 - 5pm**

**Visit: [www.suffolkopenstudios.org](http://www.suffolkopenstudios.org) and click on 'events calendar' to see what is happening throughout the year.**

# Artists' Index (Alphabetical order)

No.	Name	Medium	Area
16	Mary Anstee-Parry	Sculptor	Mid Suffolk
69	Helen Armstrong Bland	Mixed Media	Suffolk Coastal
23	Sue Arnold	Pastel	Mid Suffolk
83	Nicola Atchley	Printmaking	Suffolk Coastal
3	Federico Baca	Paintings & Print	St Edmundsbury
99	Hilary Barry	Oil Painting	Waveney
80	Lisa Berry	Abstract Artist	Suffolk Coastal
82	Naomi Brangwyn	Glasswork	Suffolk Coastal
50	Val Bright-Jones	Painting	Babergh
10	Emma Buckmaster	Printmaking	Mid Suffolk
79	Lin Carter	Weaver & Textile	Suffolk Coastal
46	Nick Carter	Painting	Babergh
70	Helen Cassells	Weaving	Suffolk Coastal
8	Diana Chapman	Painter & Print Maker	Mid Suffolk
14	Louise Chapman	Painting	Mid-Suffolk
24	Sue Clarke	Pastel	Mid-Suffolk
97	Boo Compton	Abstract Artist	Waveney
88	Sophie Cook	Ceramics	Suffolk Coastal
67	Frankie Cooper	Textile artist	Suffolk Coastal
6	Marcella Cooper	Linoprints & Paintings	Forest Heath
44	Michael Crowe	Oil Painting	Babergh
32	Cathy D'Arcy	Ceramics	Babergh
100	Hugh Davies	Printmaker	Waveney
33	Chris Deacon	Mosaic	Babergh
43	Marnie Deakins	Painting & Ceramics	Babergh
12	Joff Duck	Wildlife Portraits	Mid Suffolk
28	Brin Edwards	Painting	Babergh
66	Fiona Fawcett	Kiln Formed Glass	Suffolk Coastal
60	Angelique Fraser-Mackenzie	Art textiles	Suffolk Coastal
48	Rodney Freeman	Oil Painting	Babergh
65	Daphne Gardner	Mixed Media	Suffolk Coastal
54	Emma Garnham	Fused Glass	Ipswich
63	Clare Gaylard	Lampwork Glass	Suffolk Coastal
68	Geraldine	New Mediums	Suffolk Coastal
40	Judith Glover	Contemporary Art	Babergh
86	Sally Goodacre	Textile Art	Suffolk Coastal

# Artists' Index (Alphabetical order)

No.	Name	Medium	Area
55	Karl Greene	Ceramics	Ipswich
17	Nicolette Hallett	Oil Painting	Mid-Suffolk
57	Ali Hollingsworth	Art boxes	Suffolk Coastal
89	Spadge Hopkins	Metal Sculpture	Suffolk Coastal
53	Bev Howe	Acrylic Painting	Ipswich
104	Lisa Hurcum	Print Maker	Waveney
29	Cally James	Ceramics	Babergh
25	Susie Joyce	Paint & Sculpture	Mid-Suffolk
9	Diana Kearsley	Watercolour & Acrylic	Mid Suffolk
35	Clare Kiely	Textiles	Babergh
27	Belinda King	Painter & Printmaker	Babergh
4	Kerry Lansdown	Artist Printmaker	St Edmundsbury
5	Liesel Lawrence	Ceramics	St Edmundsbury
56	Marian Lishman	Painting	Ipswich
84	Patricia Lomax	Abstract Painter	Suffolk Coastal
22	Sara MacIver	Painting	Mid Suffolk
52	Adam Marsh	Ceramics	Ipswich
37	Elizabeth Martland DeAlwis	Oil Painting	Babergh
95	Toby Mayhew	Painting	Suffolk Coastal
7	Christine McKechnie	Fine Art Painting	Mid-Suffolk
45	Mill Tye Gallery	Painting	Babergh
19	Rebecca Guyver	Pastel	Mid Suffolk
62	Becky Munting	Painting	Suffolk Coastal
75	Jim Nind	Mixed Media	Suffolk Coastal
102	John Parker	Watercolours & Oils	Waveney
76	Jim Parsons	Chairmaker	Suffolk Coastal
74	Jenny Partridge	Watercolours	Suffolk Coastal
18	Rachel Pedder-Smith	Watercolour Painting	Mid Suffolk
20	Robin Pedder-Smith	Abstract Artist	Mid Suffolk
41	Kate Perkins	Printmaker	Babergh
42	Lucy Perry	Painter & Printmaker	Babergh
13	Leon Pettersson	Ceramics	Mid-Suffolk
2	Evelyn Polk	Mixed Media	St Edmundsbury
15	Lucy Redman	Ceramics & Pin Art	Mid Suffolk
26	Annabel Ridley	Abstract Painting	Babergh
39	Jacqueline Robins	Printmaking	Babergh
38	Ivan Robinson	Painting	Babergh

# Artists' Index (Alphabetical order)

No.	Name	Medium	Area
11	Gilly Rochester	Drawings & Paintings	Mid Suffolk
105	Nina Roffey	Mixed Media	Waveney
30	Carol Saunderson	Painting	Babergh
85	Ruth Seabrook	Printmaking	Suffolk Coastal
98	Fiona Shreeve	Ceramics	Waveney
21	Ruth Simpson	Painting	Mid-Suffolk
64	Colin Slee	Painting & Drawing	Suffolk Coastal
31	Catherine Smith	Painting	Babergh
49	Usch Spettigue	Oil Painting	Babergh
73	Jayne Stansfeld	Textiles	Suffolk Coastal
1	Ed Stokes	Painting	St Edmundsbury
91	Sudbourn Park Printmakers	Printmakers	Suffolk Coastal
106	Suffolk Artlink	Studio/Gallery	Waveney
72	Honor Surie	Painter	Suffolk Coastal
93	The Distressed Artist	Studio/Gallery	Suffolk Coastal
94	The George Farnham Gallery	Gallery	Suffolk Coastal
51	Wendy Theobald	Painting	Babergh
78	Kingsley Thompson	Textile Artist	Suffolk Coastal
61	Annie Turner	Ceramics	Suffolk Coastal
87	Simon Turner	Coastal Artist	Suffolk Coastal
71	Henrietta Villiers	Printmaking	Suffolk Coastal
77	Jon Warnes	Wood Craftsman	Suffolk Coastal
34	Claire Weeks	Watercolour Painting	Babergh
92	Susan Whatling	Painting & Printmaking	Suffolk Coastal
96	Bob Wild	Drawing & Painting	Waveney
101	Jennie Wild	Ceramics	Waveney
90	Steven Will	Ceramics	Suffolk Coastal
58	Allan Williams	Painting	Suffolk Coastal
103	Joy Wilson	Abstract Artist	Waveney
59	Andrea Wright	Jewellery	Suffolk Coastal
81	Mary Wyatt	Ceramics	Suffolk Coastal
36	Dominica Yannaghas	Pastel	Babergh
47	Pamela Yeend	Abstract Artist	Babergh

## Open Studio Event

### Studios are open 11am - 5pm, for the first four weekends in June

Throughout weekends in June our artists are opening their studios to the public giving you the opportunity to experience 'behind the scenes' and find out where and how they produce their work and discuss the inspiration behind it.

You will be able to view preliminary work, sketchbooks, work in progress and the processes involved, with some artists giving demonstrations of their techniques and you may even be able to have a go yourself in a relaxed environment.

With both unfinished and finished work to browse there is also the possibility of buying an original piece of artwork and many artists are willing to discuss commissions for unique pieces of work designed to your individual requirements.

When planning your studio visits, please check the artist's individual listings for their opening dates and for further details.

**Posters with the SOS logo identify each Open Studio.**



# Forest Heath

● Thetford

5

Honington

●

2

1

Barrow

●

Bury St Edmunds

●

# M

# St. Edmundsbury

3

4

Haverhill

●

Clare

●

# Babergh



## 1 Ed Stokes

Painting

June 2/13, 16/17, 23/24  
11am - 5pm



I work predominantly in black and white. Most of my body of work uses just two hues of acrylic paint, giving me the freedom to create expressive and atmospheric backdrops in which to set traditional pen and ink images of wildlife, citing influences from Victorian illustration – as well as Impressionism and Abstract Expressionism. The mix of styles makes for simultaneously delicate, yet bold work which reflects my

personality and interests.

We're just off the A143 near Ixworth – look out for the windmill (not the watermill!)

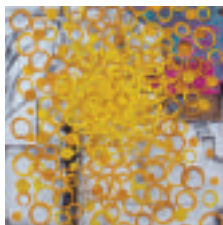
Thrive, 3 Old Hall Barns, Thurston Road, Pakenham IP31 2NG  
01359 231009 | [www.thrivefloristry.com/Ed-Stokes-Art.html](http://www.thrivefloristry.com/Ed-Stokes-Art.html)



## 2 Evelyn Polk

Mixed Media

June 9/10, 23/24  
11am - 5pm



My work is centred around the found object. I primarily use cross printmaking techniques and explore mixed media, collage techniques. Works are partly to a total abstract quality. I graduated from Cambridge Art School and have exhibited at The Mall Gallery - London, The Edmund gallery - Bury St Edmunds, Byard Art - Cambridge and others.

Studio is in the back of 33 Fornham Road. Go through the red side gate and head to the top of the garden.

33 Fornham Road, Bury St Edmunds, IP32 6AW  
07736 576167 | [polkevelyn@yahoo.co.uk](mailto:polkevelyn@yahoo.co.uk) | [evelynpolk.vpweb.co.uk](http://evelynpolk.vpweb.co.uk)

## 3 Federico Baca

Paintings & Print

June 23/24  
11am - 5pm



Argentinian artist now living in Suffolk. Focus is on paintings and prints that respond to nature, including landscapes and more mystical representations of the natural world. Also inspired by travels to the East.

From Bury take A143 to Haverhill. Pass through Horringer. After 15 minutes drive, turn left towards Denston. Turn right across bridge (pink cottage on left). Drive through village. Second house on left after church. From Haverhill take A143 to Bury. Pass sign on left to Wickhambrook, next turning right is Water Lane (an MOT garage is on the corner). Drive down road for 1 mile. Second house on right. Park on drive or road verge.

Trundalls, Water Lane, Denston, CB8 8PP  
07866 226041 | [fedebaca@gmail.com](mailto:fedebaca@gmail.com)  
[www.facebook.com/pg/FedeBacaArtist/post](https://www.facebook.com/pg/FedeBacaArtist/post)

## 4 Kerry Lansdown

Artist Printmaker

June 23/24  
11am - 5pm



From my studio in beautiful Hundon, I produce a variety of artworks utilising an array of Printmaking techniques such as Lino, Drypoint, Etching, Mono and Screen. Inspiration floods in from intimate and historical sources, awe-inspiring surroundings, meditations and the glorious minutiae of life.

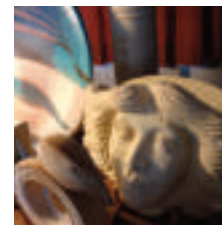
We are situated on top of Mare Hill, the steep hill at the crossroads at the bottom of Hundon. We are the white house third along with blue glass blocks around the front door. My studio is in the cartlodge at the front of the house.

Whitethorns, Mount Pleasant, Hundon, Suffolk CO10 8DW

## 5 Liesel Lawrence

Ceramics

June 9/10, 16/17  
11am - 5pm



Stoneware fired pots, both useful and decorative. Mostly multi-coloured patterned surface on white clay and light glaze. Occasional sculpture and Raku fired individual pieces.

From Ixworth follow the A1088 to Honington, take right turn signed Sapiston. After 3 miles find Slate Hall on the left, midway between Bowbeck and Barningham.

Slate Hall, Bardwell Road, Barningham, Bury St Edmunds, IP31 1DG  
01359 221544 | [liesel.lawrence@mypostoffice.co.uk](mailto:liesel.lawrence@mypostoffice.co.uk)



*"As a glass artist Suffolk Open Studios gives me the opportunity to welcome members of the public to my studio and provide them with an insight into glass making, the processes, materials, the kiln and the completed work. It is a lovely way to meet people in an informal environment and chat about my artwork and what art interests they have.*

*Fiona Fawcett @ Fired Glass"*

**Fiona Fawcett**

Artwork courtesy of Simon Turner



## 6 Marcella Cooper

### Linoprints and paintings

June 9/10, 23/24  
11am - 5pm

Inspired by personal encounters with Suffolk's wildlife, Marcella nudges our innate sense for closer coexistence with nature throughout the seasons. Her compositions embrace an interplay between truth and a sense of the mystical often against a back drop of moonlight or as the sun rises to yield prints with a mood of tranquility. Marcella is a graduate of UCS with a 'BA in Fine Art', has work in galleries throughout East Anglia.



Thatched Cottage 70 yards from The Affleck Arms (middle of village) and opposite the red telephone box. Use side gate.

**Pear Tree Cottage, 4, The Street, Dalham, Newmarket CB8 8TF**  
[www.facebook.com/marcellacooperart/](https://www.facebook.com/marcellacooperart/)

*"There is no abstract art. You must always start with something. Afterward you can remove all traces of reality."*

**Pablo Picasso**



Artwork courtesy of Patricia Lomax

*"I love walking into a studio or workshop: the smell of paint or oils, unique tools and materials, intriguing sketches and maybe the hum of machinery or click of a kiln. Going behind the scenes is special - and so is opening the door. I enjoy meeting people and showing the instant alchemy of what I do, often visitors are creators in some way themselves so the exchange is always an interesting one."*

**Clare Gaylard**

# Forest Heath

Lakenheath

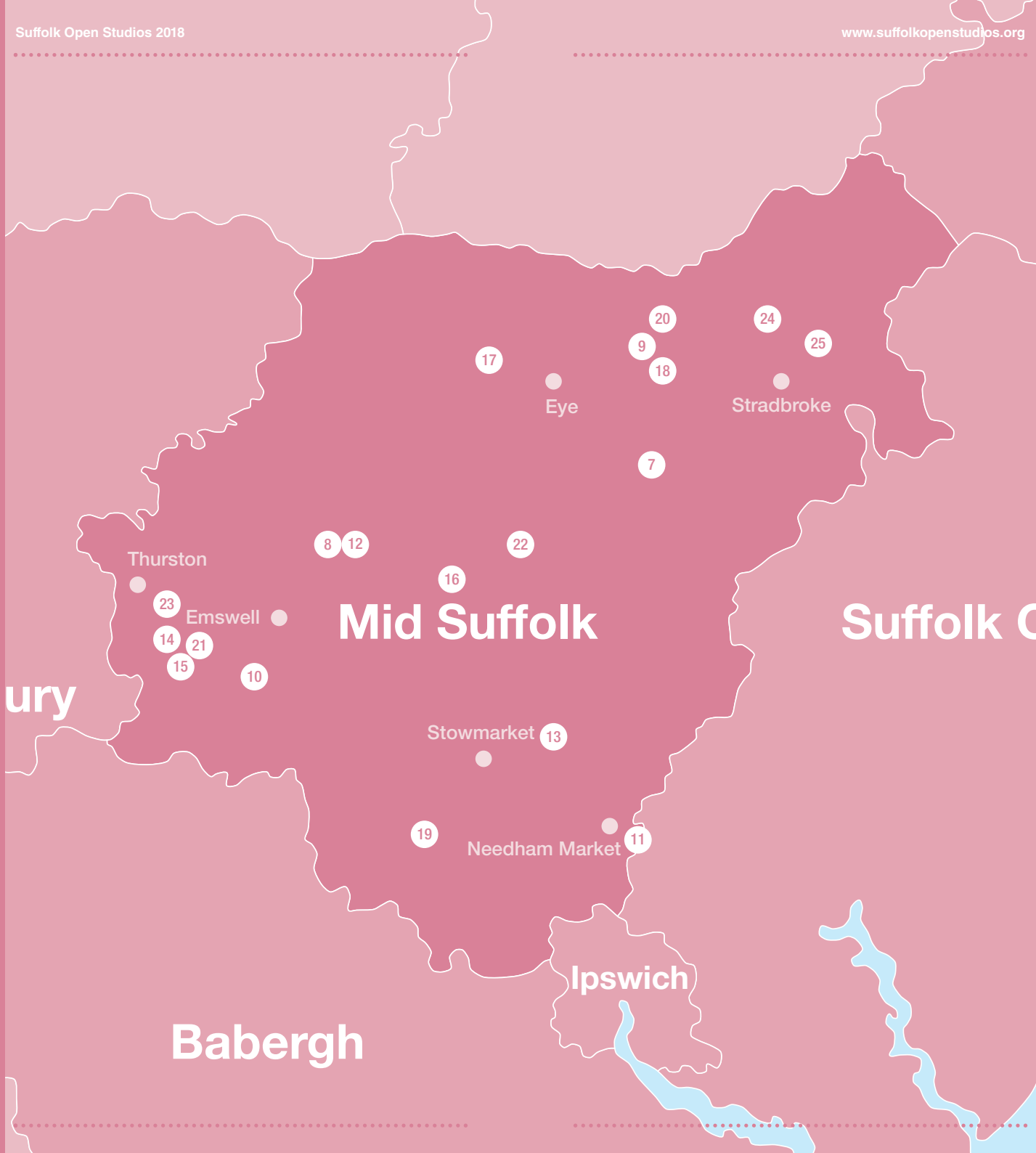
Brandon

Mildenhall

Newmarket

6

# St. Edmunds



ury

Thurston

Emswell

Mid Suffolk

Suffolk C

Babergh

Ipswich

Stowmarket

Needham Market

Stradbroke

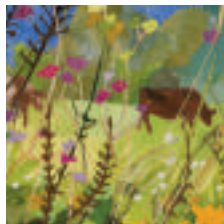
Eye

- 1
- 2
- 3
- 4
- 5
- 6
- 7
- 8
- 9
- 10
- 11
- 12
- 13
- 14
- 15
- 16
- 17
- 18
- 19
- 20
- 21
- 22
- 23
- 24
- 25

## 7 Christine McKechnie

Fine Art Painting

June 2/3  
11am - 5pm



I use almost exclusively, hand-painted Ingres and cartridge paper. This is cut, applied and layered, employing many hundreds of pieces to produce my pictures. These are Suffolk landscapes, pieces depicting my garden or nearby, or works inspired by places I have visited on holiday in Britain or abroad.

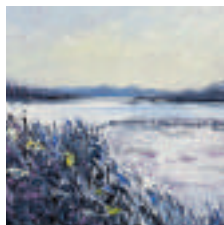
Cornerways is a pink thatched cottage on the sharp corner before the small green in the centre of Southolt. Our parking area is opposite the green if you are coming from Woringworth

Cornerways, The Street, Southolt, Eye, IP23 7QJ  
01728 628732 | christinemckechnie@suffolkonline.net  
christinemckechnie@suffolkonline.net

## 8 Diana Chapman

Painter and print maker

See page 29 for dates  
11am - 5pm  
Art at Wingfield Barns



I grew up in South Suffolk and have recently moved back to my home county. I exhibit in Leicestershire as well as in Suffolk. My most recent landscape studies reflect the feeling of being grounded and having a relationship with the land, of breathing the Suffolk air, with the wind in your face, of the light and colours of the region and of working quickly and in the moment.

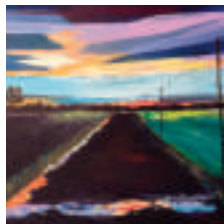
The garden studio at Rowan Cottage is on the main road through Long Thurlow. Parking available on the driveway or on Long Thurlow Road. The studio will also be open on 30th June /1st July to coincide with the village Open Gardens event.

Rowan Cottage, Long Thurlow Road, Long Thurlow, (Great Ashfield) ,  
Bury St Edmunds IP31 3HY  
www.johnsartclass.com

## 9 Diana Kearsley

Artist – watercolour and acrylic

See page 29 for dates  
11am - 5pm  
Art at Wingfield Barns



My work is mainly street scenes and landscapes – can be abstract in design with a degree of strong colour.

From A140 south of A143 round about turn left onto B1118 to Stradbroke, before Stradbroke watch for 'brown' tourist signs on the left to Wingfield Barns. Follow these to the Barns.

Wingfield Barns, Church Road, Wingfield, Suffolk IP21 5RA  
http://johnsartclass.com



## 10 Emma Buckmaster

Printmaking

June 17/18  
11am - 5pm  
Heart of Suffolk



I am a printmaker and I specialise in and teach etching. My print studio will be open and I will be showing a selection of recent work. This will include my Newmarket Racing series of prints and some of the recent Tree Portraits on leaf paper, which I am working on with Janet French. I also have a small pottery and I like to make mugs and bowls for daily use. Together with potter Lucy Redman we will be doing some demonstrations.

From Felsham, take the road to Brettenham and after 1 mile turn left onto by-road. Studio is 1/3 mile along this road next to yellow thatched house.

Moores Farm Studio, Felsham, Bury St Edmunds, IP30 0PU  
01449 736613 | emmabuckmaster@btinternet.com  
www.emmabuckmaster.com

## 11 Gilly Rochester

Drawings, paintings, mixed media

Not Opening

Expressive, exploratory, slightly abstracted portraits, figurative work and landscapes. Monochrome mixed media – charcoal, gesso, inks for example. Also watercolours and acrylics.

gillyrochester@gmail.com

## Heart of Suffolk Hub Open 2/3 June

Our hub, set in and around Emma Buckmaster's studio, is a chance to see a few pieces of work by each of the artist on Five Artists in the Heart of Suffolk trail. Our trail runs the following weekend. We'd love to see you at either or both open studio events. Artist: **Emma Buckmaster, Rebecca Moss Guyver, Lucy Perry, Lucy Redman and Annabel Ridley.**

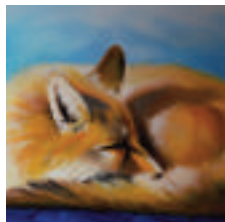
Heart of Suffolk Hub: Moores Farm Studio, Felsham,  
Bury St Edmunds IP30 0PU

Take the Brettenham Rd from Felsham and after a mile turn left onto By-road. The studio is 1/4 mile along the lane next to a yellow thatched farmhouse.

## 12 Joff Duck

Contemporary wildlife portraits

June 2/3, 9/10, 23/24  
11am - 5pm



Wildlife portraits in oil, from photographs that I have taken around my home near Badwell Ash, and further afield – I even go as far as Cambridgeshire. .... as well as along the beautiful estuaries and coastline of Suffolk.

I also do the occasional commission, when the subject takes my fancy.

East of Badwell Ash, enter the village of Long Thurlow and my house is the mid terraced cottage on the northern side. It is currently pale green. The studio is at the rear. It is approached down the side road, called Sheepgate Lane. 50yds up on the left is a track. My studio is the larch clad structure on the left.

Hares Cottage, 9 Long Thurlow Row, Badwell Ash, Suffolk IP31 3JD  
07922 264943 | [Joffduck@btinternet.com](mailto:Joffduck@btinternet.com)

## 13 Leon Petterson

Ceramics

June 9/10, 16/17  
11am - 5pm



A potter for over 30 years, making functional / decorative high fired earthenware, by slip casting & wheel throwing. Original designs & shapes, hand painted decorations inspired from nature and the English countryside. For sale in selected National Trust shops & local galleries.

From A14 take exit signposted 'Stowupland', go through village on A1120, at sharp righthand bend go straight on down Saxham Street about 1 mile, house on left with white five bar gate.

Little Meadow, Saxham Street, Stowupland, Stowmarket, IP14 5DF  
01449 976142 | [leon4pots@talktalk.net](mailto:leon4pots@talktalk.net)

## 14 Louise Chapman

Painting

June 16/17  
11am - 5pm  
Beyton & Hesselst Art Trail  
Art at Wingfield Barns



My Abstract work was initially inspired by random marks on our pavements. Using a restricted palette I paint intuitively, layering, mark making, scraping back until I see a balance of composition and colour. In my figurative work I produce a stylised, recognisable and complimentary image of the subject using exaggeration and distortion. I am willing to open my studio by arrangement call 01359270782

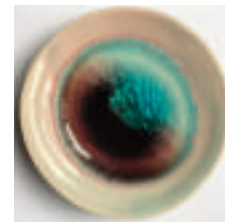
Beyton is east of Bury St. Edmunds on A14. From Beyton Green take the Hesselst Road (next to White Horse) Follow road past Beyton and Hesselst churches. Continue past Five Bells to the first right hand turn, Heath Rd. Follow Heath Rd. round a left and right bend and continue past Heath Close. Hollyhocks is the third bungalow. Enter garden via wrought iron gate on bungalow's right. The studio is bottom left of garden. Dogs are in a secure kennel.

Hollyhocks, Heath Road, Hesselst, Bury St Edmunds, IP30 9BJ  
01359 270782 | [loutilbob@btinternet.com](mailto:loutilbob@btinternet.com)

## 15 Lucy Redman

Ceramics and Pin Art

June 2/3, 9/10  
11am - 5pm  
Heart of Suffolk



Plantswoman and Potter with a love of colour, form and texture. Lucy's hand thrown stoneware incorporates richly coloured glass resulting in eye-catching pieces of decorative tableware. Pin Art based in Lucy's love of plant form and casts stunning shadows.

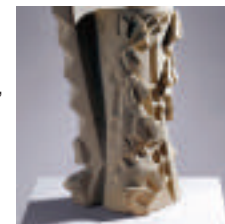
Exhibiting as part of Artists Hub/Trail held at Emma Buckmaster's Home, Moores Farm Studio, Felsham. From Felsham take the road to Brettenham and after 1 mile turn left onto by-road. Studio is 1/3 mile along this road next to yellow thatched house.

Moores Farm Studio, Felsham, Bury St Edmunds, Suffolk IP30 0PU  
07503 633 671 | [www.lucyredmanpottery.com](http://www.lucyredmanpottery.com)

## 16 Mary Anstee-Parry M.R.B.S

Sculptor of wood and stone

June 9/10, 23/24  
11am - 5pm



I have been a sculptor in wood and stone for as long as I can remember using subject matter from events in my life and from the close-by natural world. I also find, as I am getting older, that pencil drawing has become a more significant part of the process of making a sculpture. I am a member of the Royal British Society of Sculptors – a recognition I value highly. I teach on a weekly basis traditional woodcarving and letter carving from a workshop in my garden.

I live on the same side as the Church and the Blue Boar of Walsham Le Willows high street. Facing the pub I am a little to the left – the right hand side of a pair of Victorian semis. Please walk through the side gate.

Beech Cottage, The Street, Walsham Le Willows, Suffolk IP31 3AA  
01359 258558 | [anstee-parry@hotmail.com](mailto:anstee-parry@hotmail.com) | [www.anstee-parry.com](http://www.anstee-parry.com)

## Heart of Suffolk Open 9/10 June

We are five artists with studios in the heart of rural Suffolk, taking inspiration from our beautiful surroundings. Emma Buckmaster is a printmaker & potter; Rebecca Moss Guyver is a painter-printmaker who often works in pastel and also makes collages; Lucy Perry, is a painter-printmaker; Annabel Ridley screenprints and paints and Lucy Redman is a ceramicist who also makes pin art. We invite you to take the opportunity to visit us in our studios, to see how we work and what inspires us.

**Emma Buckmaster** - Printmaking & ceramics  
**Rebecca Moss Guyver** - Painting, printmaking, pastel, collage, artists' books  
**Lucy Perry** - Painting, printmaking  
**Lucy Redman** - Ceramics, pin art  
**Annabel Ridley** - Painting, screenprinting

## 17 Nicolette Hallett

Oil Painting

June 9/10, 16/17  
11am - 5pm



I am exploring ways to paint landscape which I often photograph. Sometimes when the photograph fails to catch what I felt, it may re-emerge in a painting.

From the A140 take the road to Yaxley/Mellis opposite the Eye turning. Follow through to the common at Mellis (about 1 mile). Take a right turn (small road) to Thrandeston (before the railway crossing.) After about 300 yards there is a sharp left bend and Clay Barn is on the right. Uneven drive entrance. Opposite a small woodyard. It is the last house on the common.

Clay Barn, Thrandeston Road, Mellis, Eye, IP23 8DR  
01379 783201 | nicolette@sizzel.net

## 18 Rachel Pedder-Smith

Watercolour Painting

June 23/24  
11am - 5pm



My artwork is focused on recording nature in minute detail. Much of my previous work has been undertaken at The Royal Botanic Gardens, Kew where I have had access to the specimens stored at the Herbarium. My recent work has focused on recording live plant material and insects in interesting compositions.

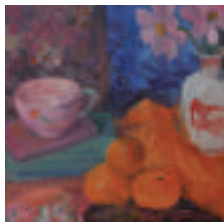
From Ipswich take the A140 towards Diss. Turn Eastwards (right) on the B1118. After approximately 2 miles turn right into the village of Hoxne. Continue past the pub and the entrance to the property (The Gardens) where Rachel's studio is comes on the right hand side just past the left hand turn to the village hall and Denham.

The Gardens, Eye Road, Hoxne, IP21 5AP  
01379 668855 | rachel@rachelpeddersmith.com  
www.rachelpeddersmith.com

## 19 Rebecca Guyver

Pastel

June 9/10  
11am - 5pm  
Heart of Suffolk



I am a colourist and work across media, referencing what I see without being bound by local colour. I love gardens and plants so these are recurring motifs in my pastels and paintings. My fused plastic collages are more abstract colour studies. My monotypes and silkscreens are concerned with light and space.

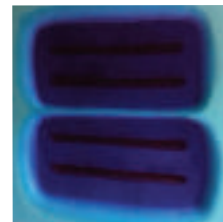
Off Battisford Straight Road, travel down Mill Road to a semi tarmacked lane. Turn into the pink thatched house. The studio is behind the house.

Nayland Farm, Mill Road, Ringshall, Stowmarket, IP14 2LS  
01449 673549 | rebecca@rebeccaguyverart.com  
rebeccaguyverart.com

## 20 Robin Pedder-Smith

Abstract Artist

June 16/17, 23/24  
11am - 5pm



I make experimental, mixed-media paintings. Sometimes i make 3-D work so that the pieces interact with the viewer in real space and time. Themes that run through my work are Expressionism, Romanticism and imagination. Im influenced a lot by living in Suffolk and also from doing an Art degree in Leeds.

Hoxne near Diss. From the A140 go through Eye turning right at the bank then an immediate left. After Eye turn left where they sell eggs. Enter Hoxne and the drive for The Gardens is on the left on the corner. Its hard to see.

The Gardens, Eye Road, Hoxne IP21 5AP  
01394 200172 | robin\_peddersmith@yahoo.co.uk



## 21 Ruth Simpson

Painting

June 16/17, 23/24  
11am - 5pm  
Beyton & Hessett Art Trail



The surrounding Suffolk countryside inspires my artwork. Painting in mostly Acrylic and inks I love to paint the rolling hills and swathes of wildflowers self-seeded on field edges. The changing seasons of nature inspire me to encapsulate the colour, texture and light in my paintings.

Hessett in approx 6 miles east of Bury St. Edmunds off Junction 46 of the A14. Come though Hessett with the Five Bells Pub on your right and play area on your left, leave the village and follow the road for approx 1 mile until you reach a farm track on your left with a sign for Freecroft Farm House. The studio is 1/4 mile down the farm track.

Freecroft Farm House, Off Manor Road, Hessett, Bury St Edmunds IP30 9BH  
07891 563466 | www.ruthsimpson.co.uk

## Beyton & Hessett Art Trail Open 16/17 June

Welcome to the Beyton and Hessett Art Trail. Working in very different styles but united in their desire to share a love of painting, Sue Arnold, Louise Chapman and Ruth Simpson warmly invite you to step inside their studios for a chat and to see work in progress, finished pieces and a glimpse into their materials, ideas and processes. Very easily accessible just off the A14 from east or west, Sue's studio is on Beyton Green just 6 miles east of Bury St Edmunds. The village green, a children's play area and two good pubs are on the spot. A short drive to Hessett takes in Louise's lovely garden studio and beyond to Ruth's idyllic rural location. Cards and prints will be for sale in addition to original pieces. Refreshments will be available in our gardens if the sun shines!

Louise Chapman - Abstract paintings in oils  
Sue Arnold - Pastels, oil paintings  
Ruth Simpson - Landscapes in acrylics and inks

## 22 Sara MacIver

Painting and printmaking



Having always loved a loose impressionistic approach to painting, with its departure from realism & its concentration on light and atmosphere, it is natural for me to apply this approach to my own oil painting. Subjects range from domestic scenes, to seascapes, to light catching a cottage in the Suffolk countryside. I do, sometimes, venture into abstraction, taking the 'essence' of the subject.

Take the turning left off the A140 (at Brockford) for Wetheringsett, heading south from Diss. Head down Cedar's Hill. At the bottom, turn left. Second thatch (Old Post Office) on your left. Park church side of road facing up hill. Enter via iron gates near Postbox. Studio in old barn ahead of you

Waveney Cottage, Church Street, Wetheringsett, Stowmarket IP14 5PH  
01449 766611 | sally\_maciver@hotmail.com | www.johnsartclass.com/sara-maciver

## 23 Sue Arnold

Pastel



My professional background is in Paper Conservation, working for many years in London and Suffolk conserving prints, drawings and watercolours. Recently I have fulfilled a long held desire to make my own artwork and began with soft pastels, enjoying their spontaneity and saturated colours. Lately I am developing my paintings in oils, experimenting with small works, playing with techniques and

exploring the delights of colour mixing.

Beyton is approx 5 miles east of Bury St. Edmunds on the A14. Turn right into the village off the slip road and sharp right and right again at the White Horse pub onto the one way side of the green. Old School is just beyond the red phone box. Park on the Green and enter through the big grey gates.

The Studio, Old School, The Green, Beyton, Bury St Edmunds, IP30 9AD  
07745 478363 | suearnold.artworks@gmail.com

## 24 Sue Clarke

Pastel



My art experience is from school, 'O' level art and much more recently with John Parker's art class at Wingfield Barns. I started painting in watercolours and am now painting in oils.

See page 29 for dates  
11am - 5pm  
Art at Wingfield Barns

June 16/17  
11am - 5pm  
Beyton & Hesselst Art Trail

See page 29 for dates  
11am - 5pm  
Art at Wingfield Barns



## 25 Susie Joyce

Paint & Sculpture

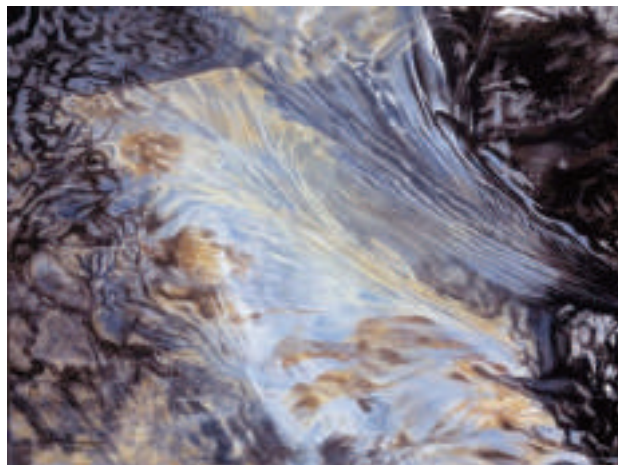
June 2/3, 16/17  
11am - 5pm

I am a painter, printmaker and sculptor. I paint in acrylics on canvas and watercolours on paper. My work is about my love of discarded objects, rusting and interesting. I abstract the images and show the beauty in things we discard. My sculptures are made from found objects, fun and interesting.



Mill Lane is outside Stradbroke village centre on Laxfield Road B1117. Go up the hill past the cemetery then turn left. Mill Lane is 3/4 mile long and studio is at the end. From Laxfield coming from the east when you see the sign for Stradbroke slow down, passing several houses. Turn right into Mill Lane. There is a white sign indicating Mill Lane.

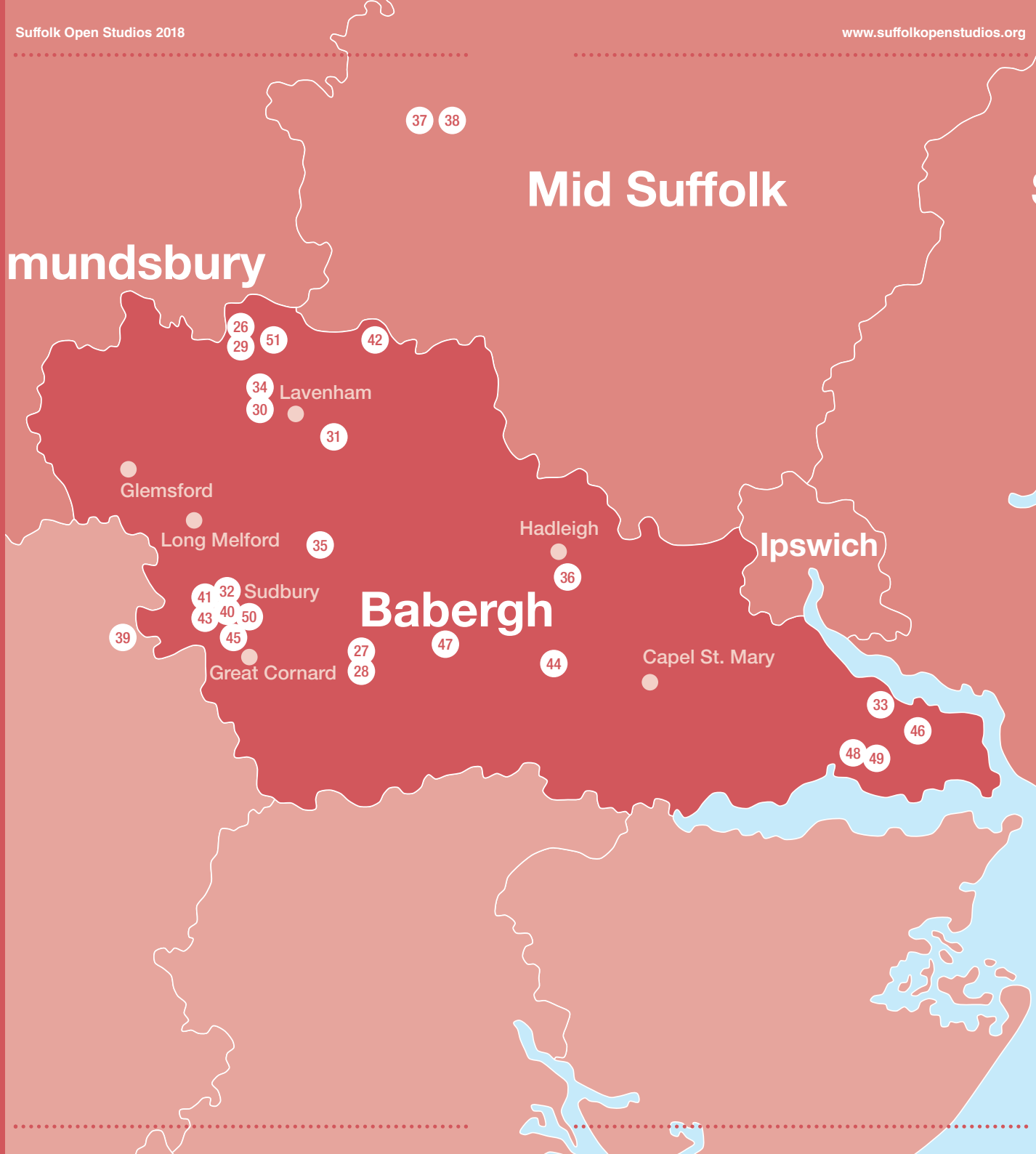
Brooklands Barn, Mill Lane, Stradbroke, Eye, IP21 5HW  
07889 646755 | susie@susiejoyce.co.uk | www.susiejoyce.com



## Inspired Art at Wingfield Barns Open 2/3, 9/10, 16/17, 23/24 June 30/1 July & all four Tuesdays in June.

The newly formed group of seven will be exhibiting throughout June in the light-filled galleries at the beautiful Wingfield Barns. See their varied and vibrant work any weekend or Tuesday during the Suffolk Open Studios month. Artist: **John Parker, Boo Compton, Sue Clarke, Sara Maciver, Diana Kearsley and Diana Chapman.**

Inspired Art at Wingfield Barns: Wingfield Barns, Church Road Wingfield, Suffolk IP21 5RA (The Barns complex on Church Road Wingfield is signposted off the B1118 between Stradbroke and Hoxne on the Suffolk Norfolk border, not far from Diss.)



# Mid Suffolk

## mundsbury

## Ipswich

## Babergh

Lavenham

Glensford

Long Melford

Hadleigh

Sudbury

Great Cornard

Capel St. Mary

37 38

26 29

51

42

34

30

31

35

36

41

32

43

40

50

45

39

27

28

47

44

33

46

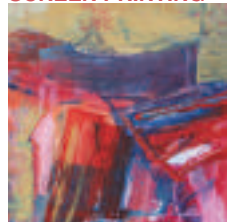
48

49



## 26 Annabel Ridley

**ABSTRACT PAINTING /  
SCREEN PRINTING**



Recent work uses multi print processes with paint production application often blurring the boundaries between print and painting. Produces work on a large scale, that responds to both inner and outer worlds creative process, memory, place and drawing. Studied at St.Martins and Camberwell schools of Art London. Private and Public Commission Work Available.

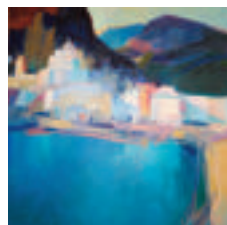
June 9/10, 23/24  
11am - 5pm  
Heart of Suffolk

Take the B1078 between Bildeston and Needham Market you will find the village of Neding with Naughton. Situated directly opposite the petrol station is Red House Farm with the studio behind the house. Field parking available ( follow the signs )

Roselen, The Street, Lawshall, Bury St Edmunds, IP29 4QA  
01449 741267 | [annabelridley@mac.com](mailto:annabelridley@mac.com) | [www.annabelridley.net](http://www.annabelridley.net)

## 27 Belinda King

**Painter, Printmaker**



Colourful stylised, atmospheric landscapes in oils, life drawings and prints.

June 3/4, 10/11  
11am - 5pm  
Artists Around Sudbury

Turn off A134 between Newton Green and Leavenheath to Assington. Left turn at phone box to Vicary Estate. Entrance to studio just behind high hedge on right.

14 Vicary Estate, Assington, Sudbury, CO10 5LL  
01787 210932 | [belindakingartist@gmail.com](mailto:belindakingartist@gmail.com)  
[www.belindakingartist.co.uk](http://www.belindakingartist.co.uk)



## 28 Brin Edwards

**Painting**



I paint wildlife and landscapes mainly in oils concentrating on light and atmosphere. Council member of the Society of Wildlife Artists. I work from a straw bale studio.

June 9/10  
11am - 5pm  
Artists Around Sudbury

Turn into the village of Assington from A134 Sudbury to Colchester Road. Go past pub on left and turn left into Barracks Road. No 59 is 400 yards on left.

The Studio, Maple Cottage, 59 Barracks Road, Assington, Sudbury, CO10 5LP  
01787 211162 | [studio@brin-edwards.com](mailto:studio@brin-edwards.com) | [www.brin-edwards.com](http://www.brin-edwards.com)

## 29 Cally James

**Ceramics**

I am currently studying for MA Fine Art focusing my research on the culture of tea drinking and the senses. My work reflects some of my ideas and inspirations. I also love to experiment with wood; making and carving. This year I have experimented with casting hands and feet amongst other human features all related to the senses. I look forward to investigating and creating further the senses especially touch.

June 2/3  
11am - 5pm



A134 from Bury St Edmunds, approx 1 mile, The Swan pub is on the left, Studio next house on the right.

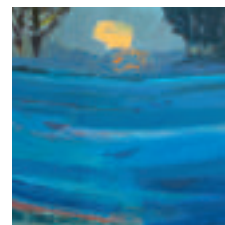
Roselen, The Street, Lawshall, Bury St Edmunds, IP29 4QA  
01284 827136 | [potter\\_43@hotmail.co.uk](mailto:potter_43@hotmail.co.uk)

## 30 Carol Saunderson

**Painting**

I produce positive, vibrant and playful abstract landscapes. What really excites me is colour. I am influenced by my love of mid-20th century painting and design. I exhibit at galleries around the UK. My work has been published as prints by John Lewis and greetings cards by Green Pebble.

June 2/3  
11am - 5pm



White cottage, next to the garage at Alpheton.

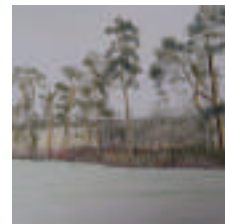
Wren Cottage, Tye Green, Alpheton, Sudbury, CO10 9BW  
07818 220662 | [carol@artistinthelandscape.co.uk](mailto:carol@artistinthelandscape.co.uk)  
[www.artistinthelandscape.co.uk](http://www.artistinthelandscape.co.uk)

## 31 Catherine Smith

**Painting**

I aim to make my painting and drawing an intuitive response to the landscapes and interiors around me, whether it be the views from windows, through doorways, along pathways or closer observations of plants and flora. I hope that my work captures something of the essence of these moments.

June 2/3, 9/10, 16/17, 23/24  
11am - 5pm



Water Street is just off the High Street past the Swan Hotel and Copingers is the pink house on the right opposite the restaurant "10"

Copingers, 66 Water Street, Lavenham, CO10 9RW  
01787 249895 | [cathsmith\\_uk@yahoo.co.uk](mailto:cathsmith_uk@yahoo.co.uk)

## 32 Cathy D'Arcy

Ceramics, sculptural & domestic ware

June 9/10, 23/24  
11am - 5pm  
Artists Around Sudbury



I work in grogged porcelain and sculptural stoneware clays to create unusual, interesting figures and creatures that I hope put a smile on your face, as they do for me whilst making them. I also use the wheel to throw simple vessels.

Please enter through garden gate on School Street

Corner House, Straw Lane, Sudbury CO10 2AT  
01787 371191 | cathydarcy3@gmail.com

## 33 Chris Deacon

Mosaic

Not Opening



My mosaics reflect an ongoing interest in the natural world and world cultures. Using a variety of materials and mosaic techniques the colours, textures and design possibilities of each subject are explored and celebrated.

01473 780819 | chris\_deacon@btconnect.com

## 34 Claire Weeks

Watercolour Painting

June 2/3  
11am - 5pm



Artist and designer. As well as original paintings my images are on a range of tableware: melamine placemats and coasters, heat resistant glass round platters, smooth surface protectors and textiles. By combining a vibrant colour palette with quirky fun names each of my lively hen and cockerel watercolour paintings are brimming with movement and personality adding humour and

practicality to domestic kitchens.

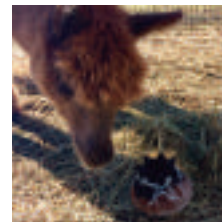
In Alpheton village in 30 mph bit, on A134, from Bury St Edmunds, Newmans Lodge is first house on the right.

Newman's Lodge, Bury Road, Alpheton, CO10 9BP  
01284 827514 | claire.weeks282@gmail.com | www.claireweekart.co.uk

## 35 Clare Kiely

Textiles

June 17/18  
11am - 5pm  
Artists Around Sudbury



It is the gentle beauty of our three alpacas and the glorious softness of their fleece that is the foundation of my work. In a world that is obsessed with speed, my art is slow and sustainable, using the natural colours of the alpacas and spinning, weaving and felting by hand. Come and meet the alpacas, see my work and find out about the workshops I run.

From mini-roundabout on B1115 in Great Waldingfield, take turning towards Lavenham, then take first road on right signposted to Edwardstone (Folly Road). Continue along here passing new housing estate on left, followed by row of older houses. Straight after this, turn left at grass triangle signposted to the Church (Rectory Road). 2 Rectory Cottages is first house on right.

2 Rectory Cottages, Great Waldingfield, Sudbury, CO10 0TL  
01787 371654 | clare@suffolkalpaca.co.uk | www.suffolkalpaca.co.uk

## 36 Dominica Yannaghas

Pastel

June 16/17, 23/24  
11am - 5pm



Dog portraiture is my speciality and pastel my favourite medium. For the last ten years I have drawn portraits by commission, including some cats and horses. In the past year, I've been focussing on making my backgrounds more ambitious by incorporating a broader range of colour and form into them. I have experimented with oils recently and was delighted to have an oil painting of my whippet Olive accepted by the Ipswich Art Society last April for their annual exhibition.

We are situated in Hadleigh, off Edwin Panks Road which runs past the High School, at the 'top end' of town, near Highlands Road.

2 Jordayn Rise, Hadleigh, Ipswich, IP7 5SY  
01473 822360 | enquiries@foofsterdesigns.com | www.dogsbydominica.com

## Artists Around Sudbury Trail Open 9/10 June

Our diverse Art Trail has something for everyone. Eight artists working in a wide variety of media from ceramics and painting to printmaking and textiles and including the inspiring Mill Tye Gallery. Come and visit us in our studios and see how we work.

**Judith Glover** - Mixed media

**Marnie Deakins** - Painting and ceramics

**Kate Perkins** - Printmaking and patchwork stitching

**Cathy D'Arcy** - Ceramics, sculptural and domestic

**Clare Kiely** - Alpaca textiles

**Elizabeth Martland DeAlwis** - Oil painting, watercolour and drawing

**Brin Edwards** - Painting

**Belinda King** - Painting and printmaking

**Mill Tye Gallery** - Local contemporary artists, printmakers, sculptors and potters

## 37 Elizabeth Martland DeAlwis

Oil Painting

June 9/10  
11am - 5pm  
Artists Around Sudbury



Mainly oil painting, some watercolour, drawing and pen & inks of my surroundings. I studied art at Brighton where I discovered Edward Hopper and a love of the coast. I love Hoppers use of stark bright colour and compositions of intrigue. A career in art took me to the Caribbean where I lived & taught art for 10 years. The light there changed the way I see things and my palette is still saturated

with its heat 14 years after returning to Suffolk.

Driving in the Hadleigh direction from Sudbury, take the first turn to Boxford from the A1071. After the church, follow the road to the left a quarter of a mile up the hill. My studio is in my garden at the above address on the right of the road. Look out for the signs.

1 Homefield, Swan Street, Boxford, Suffolk CO10 5PB  
01787 211611 | emartart@hotmail.com | www.elizabethmartland.co.uk

## 38 Ivan Robinson

Painting and Photography

Not Opening



His paintings in oils and acrylics are principally of landscapes, often of small details or the effects of weather. It is this combination of geography and art which afford him a unique way of seeing and interpreting landscape.

In his photography, he uses film rather than digital imagery. He hand prints traditional black and white silver halide prints from his original film negatives. His subject matter comprises rural and urban landscapes, often focusing on small details.

## 39 Jacqueline Robins

Printmaking

June 2/3, 9/10, 16,17  
11am - 5pm



My printmaking is inspired by landscape and a 'sense of place' - my emphasis is on texture and abstraction. I usually create images in a variable series rather than in editions. This means I print related images using sets of photo screens and stencils. I also like to adopt a similar principle with lino, creating a body of related relief components to be used in a jigsaw type process.

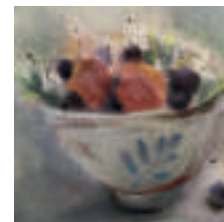
Leaving Sudbury via the A131 along Cross Street and then Ballingdon Street turn right at the traffic lights towards Bulmer. Proceed via Kitchen Hill onto The Sudbury Road continue through Bulmer, after a further 2.5 miles approx - take left turn marked Hill Farm. Proceed up farm lane to the top where you will find the studio on the left opposite the farm house.

Long Furrow Studio, Hill Farm, Sudbury Road, Gestingthorpe, Suffolk CO9 3BL  
01787 377469 | jacquelinerobins2@yahoo.co.uk

## 40 Judith Glover

Contemporary Art

June 9/10  
11am - 5pm  
Artists Around Sudbury



Visit my studio to see work in progress, framed and unframed paintings, drawings, portraits, plant studies and pastels for sale.

Walk round the developing garden and see the flowers and plants that inspire me and buy Judith Glover greetings cards, prints and stationery.

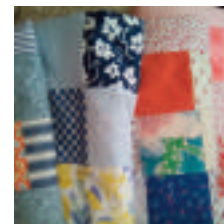
We are in Friars Street, almost opposite the Angel Wine Bar and just a few minutes walk from the centre of Sudbury. Entrance is via the driveway into Marnie Deakins studio at No. 40a, St Davids Hall and through the gate on the right of the driveway.

Greyfriars, 40 Friars Street, Sudbury, CO10 2AG  
07967 662219 | judith@judithglover.com | www.judithglover.com

## 41 Kate Perkins

Printmaker and patchwork stitcher

June 9/10 11am - 5pm  
23/24 11am - 4pm  
Artists Around Sudbury



I enjoy mixing printmaking techniques with collage, especially. For my patchwork I recycle much loved materials to make unique pieces.

Enter through gated driveway between 57a and 59 and follow signs.

57 Friars Street, Sudbury, Suffolk CO10 2AG  
01787 373877 | kateperkinspg@gmail.com



## Shotley Peninsula Trail Open 2/3, 9/10 June

The Shotley Peninsula is a beautiful and unspoilt area to explore during the month of June. Three artists are opening their Studios to the public so they can explain and show their work.

**Rodney Freeman** - oil paintings reflect his love of the seasons and the play of light on the land and seascapes.

**Usch Spettigue** - colourful and sculptural porcelain ceramic pieces embodies her affection for natural forms.

**Nick Carter** - creates both vibrant paintings and crisp detailed pen and ink drawings. Nick's Studio is open every weekend in June.

## 42 Lucy Perry

Painter and printmaker

June 9/10, 23/24  
11am - 5pm  
Heart of Suffolk



Lucy Perry works in acrylic on canvas and board producing both small studies and large scale paintings that explore natural forms and/or domesticity. Colour and pattern are key elements. Imagery celebrates the objects that we live with – from treasures collected in the garden to nature's wild offerings, from the mundane trappings of daily life to belongings we cherish. These ideas are also explored

through printmaking in both screen prints and linocuts. As well as a practising artist, Lucy is a qualified and experienced Art Teacher.

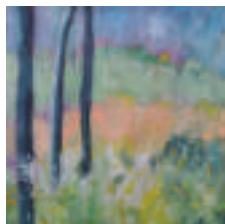
On the Junction of Dakings Lane and Bury Road.

Home Farm House, Bury Road, Thorpe Morieux, Bury St Edmunds IP30 0NT  
07779267623 | [www.lucyperryart.co.uk](http://www.lucyperryart.co.uk)

## 43 Marnie Deakins

Painting & Ceramics

June 23/24  
11am - 5pm  
Artists Around Sudbury



Paintings in oil and mixed media reflecting the light and narrative of landscapes. My ceramics are hand built organic forms often combined with other materials including fabrics, wire and wood.

Opposite The Angel pub on Friars St.

St.David's Hall, 40a Friars Street, Sudbury, CO10 2AG  
01787 372447 | [marniedeakins@yahoo.co.uk](mailto:marniedeakins@yahoo.co.uk) | [www.marnie-deakins.co.uk](http://www.marnie-deakins.co.uk)

## 44 Michael Crowe

Oil Painting

June 2/3  
11am - 5pm



Painting continually for the last 15 years. Regular courses attended with Hugo Grenville, Christopher Baker and Hugh Webster. R.A Drawing School. Several solo shows. Last year exhibited at Hintlesham Hall with Cobbold and Judd. Mainly oil/landscape.

From Hadleigh to Lower Layham then sign to Shelley. After one mile Shelley House is on the right. Studio is signposted.

Shelley House, Shelley, Ipswich, IP7 5QY  
01473 827868 | [michaelcrowe@me.com](mailto:michaelcrowe@me.com)



## 45 Mill Tye Gallery

Painting

June 2/3, 9/10, 16/17, 23/24  
11am - 5pm  
Artists Around Sudbury



A unique destination for Contemporary Art, Sculpture, Handmade Pottery, Gifts and Cards. The Gallery is set by the idyllic River Stour in Great Cornard. The historic mill building, which traces its roots back to the Domesday Book of 1085. The Gallery hosts monthly exhibitions of local contemporary artists, printmakers, sculptors and potters.

Leaving Sudbury on the Cornard/Bures Road, follow through Great Cornard passing two roundabouts and Bakers Mill will be found on the right hand side opposite the King's Head Pub and just before the Motorists Discount shop. Turn right into Mill Tye. Parking is in the car park before the single track railway level crossing. The gallery is a short walk opposite the Mill Pond, before the river, in the old Bakers Mill Building.

3 Cornard Mills, Mill Tye, Great Cornard, Sudbury, Suffolk CO10 0GW  
01787 376 796 | [millye@icloud.com](mailto:millye@icloud.com) | [www.millyegallery.co.uk](http://www.millyegallery.co.uk)



## 46 Nick Carter

Painting

June 2/3, 9/10, 16/17, 23/24  
11am - 5pm  
Shotley Peninsula Trail



Inspired by the meeting of the earth and sky, Nick's paintings are of sweeping vibrant horizons in bright clear colours. In startling contrast are his crisp detailed pen and ink drawings. He has exhibited in London, Manchester, Lincoln, Ipswich, Southwold, Aldeburgh, Snape Maltings and Brittany.

Take B1456 Shotley Road. Turn right at Chelmondiston down Lings Lane. Turn left at Grove Lane, through the trees. Keep straight on via track to Crouch House.

Crouch House, Grove Lane, off Lings Lane, Chelmondiston, Ipswich, IP9 1HD  
01473 780808 | 07710 245925 | [nickcarterartist@gmail.com](mailto:nickcarterartist@gmail.com)

## 47 Pamela Yeend

Abstract Artist

Not Opening



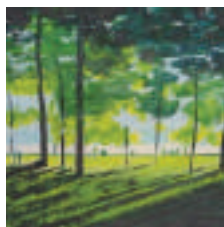
My work is influenced by direct experience as well as being a response to personal or current issues. I experiment with various media – oil, watercolour and acrylic paint as well as mixed media, printmaking techniques, collage and drawing.

[pmyeend@aol.com](mailto:pmyeend@aol.com)

**48 Rodney Freeman**

Oil Painting

June 2/3  
11am - 5pm  
Shotley Peninsula Trail



I fall in love with a view and can paint it time and again in different seasons and different light. Style is impressionist. Subjects are found mainly in East Anglia but also around the world. Light on water fascinates me.

From the Bakers Arms in the middle of the village, go 150 yards towards Holbrook. Pink-washed house on the right.

Lavender Cottage, The Street, Harkstead, Ipswich, IP9 1BN  
01473 328381 | rodneymfreeman@hotmail.co.uk

**49 Usch Spettigue**

Oil Painting

June 2/3, 9/10  
11am - 5pm  
Shotley Peninsula Trail



Colourful and sculptural my porcelain pots are designed as on off artefacts which retain their basic function. The jugs, while suggesting natural forms, have a variety of different handles and spouts – ensuring that each one is an individual figurative presence.

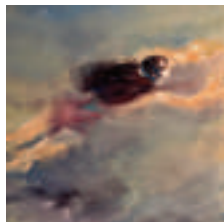
B1456 from Ipswich, turn first right in Woolverstone, past White House Farm, past Red House Farm, ignore signpost to Harkstead, straight on to T-junction on top of hill, turn right, skirt round the Church wall. Left at Old School, Rectory Cottage 400 yards on the left.

Rectory Cottage, Harkstead, Ipswich IP9 1DE  
01473 787587 | usch@spettigue.com

**50 Val Bright-Jones**

Painting

Not Opening



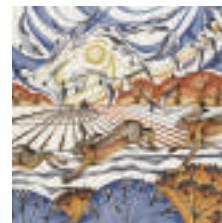
My Art Practice is mainly in painting. I like to create an ambiguity by using an impressionistic, expressive version of figuration. After completing an MA Fine Art I am launching a series of Art Workshops this year. I am also continuing to exhibit my work.

artistval@icloud.com | www.valbright-jones.com

**51 Wendy Theobald**

Painting

June 2/3, 9/10, 16/17, 23/24  
11am - 5pm



I am a wildlife artist and illustrator working in watercolour and watercolour pencils. I am continually inspired by the form, colour and structure that is found in the fauna and flora that I see all around me.

My artwork depicts brown hares, mammals and a variety of birds. These are available as cards, prints and originals.

Take the Lawshall turning off the A134. First house on the left.

Samoth, Cockfield, Bury St Edmunds IP30 0JP  
01284 827327 | wendy.theobaldart@gmail.com  
www.wendytheobald.com/



*"As this is the first time I have had my studio open for a very long time I am not sure what to say except that as I have enjoyed demonstrating woodcarving at Wyken for a number of years I am sure I will do the same at my Open Studio weekends."*

**Mary Anstee-Pary**



Artwork courtesy of Hilary Barry

*"Roll up, roll up in June ladies and gents and the rest on yer. 'Ome is where the 'art is, see, warts an'all. Come and see all the trash I've been making, and the good stuff. Decide for yourselves, anyway, if any of it reminds you of Art."*

**Toby Mayhew**



55

Ipswich

53

54

56

52

## 52 Adam Marsh

### Ceramics

June 2/3, 9/10, 16/17  
11am - 5pm  
Ipswich Trail



My work draws inspiration from traditional, classic shapes recreated in a contemporary style. Each piece is individually hand thrown and focuses on its simplicity in form, colour and style. My ceramics are unique emphasising clarity of lines created with the wheel and the clay, highlighted by sympathetic glazes and lustres. My main medium is porcelain due to the delicate forms you can create with

this material.

Via 41 Conway Close; park in the communal car park and then head for the house with the red door.

41 Conway Close, Ipswich, IP2 8PS  
07595 985312 | [mail@adammarsh.co.uk](mailto:mail@adammarsh.co.uk) | [www.adammarsh.co.uk](http://www.adammarsh.co.uk)

## 53 Bev Howe

### Acrylic paintings on paper

Not Opening



Over the years, I have experimented with a variety of mediums, but now mainly make finely detailed paintings and drawings using acrylics or pen and ink. I also have a passion for sewing and design, sew and embroider fabric collages. My inspiration comes from my over-active imagination, dreams and folklore, the insect world and memories of my father's garden from childhood.

[bev.baddeley@googlemail.com](mailto:bev.baddeley@googlemail.com) | [www.etsy.com/uk/shop/BevHoweArt](http://www.etsy.com/uk/shop/BevHoweArt)

## 54 Emma Garnham

### Fused Glass

Not Opening



I use a variety of fused glass techniques to make my artwork, however I specialise in a technique called pate de verre. This technique creates delicate glass sculptures and show glass in a different way.

07902011559 | [emmagarnhamglass@yahoo.com](mailto:emmagarnhamglass@yahoo.com) | [www.garnhamglass.co.uk](http://www.garnhamglass.co.uk)

## 55 Karl Greene

### Ceramics

June 9/10, 23/24  
11am - 5pm  
Ipswich Trail



Studio pottery with an oriental feel. Stoneware and raku pieces. Decorative as well as domestic ware. Commissions also undertaken. Pottery lessons given. Also dabble in photography and oil painting.

The studio is in the back garden of 559 Norwich Road, IP1 6JU. There is parking for three cars on the drive, if you are a confident driver. Otherwise I would recommend using Meredith road outside the shops (DO NOT park in Aldi, there are cameras and enforcement in place), or Highfield approach , or Castle road are all just a short walk from the house.

559 Norwich Road, Ipswich, IP1 6JU

07759 951464 | [karlydarling@gmail.com](mailto:karlydarling@gmail.com) | [www.kgreenepottery.co.uk](http://www.kgreenepottery.co.uk)

## 56 Marian Lishman

### Painting

June 9/10  
11am - 5pm  
Ipswich Trail



I have been working as a professional artist since 2006 when I worked in Dubai creating paintings for individuals and interior designers. My work varies from mixed media and collage to swirled acrylic abstracts and I create my own texture to use in my paintings. I work from my studio in my back garden and take part in art shows and exhibitions around the UK.

From the A14 take the Nacton exit and head down Nacton Road towards the town centre, turning left into Clapgate Lane then immediately right into Cliff Lane. I am about half way down on the left.

49 Cliff Lane, Ipswich IP3 0PD

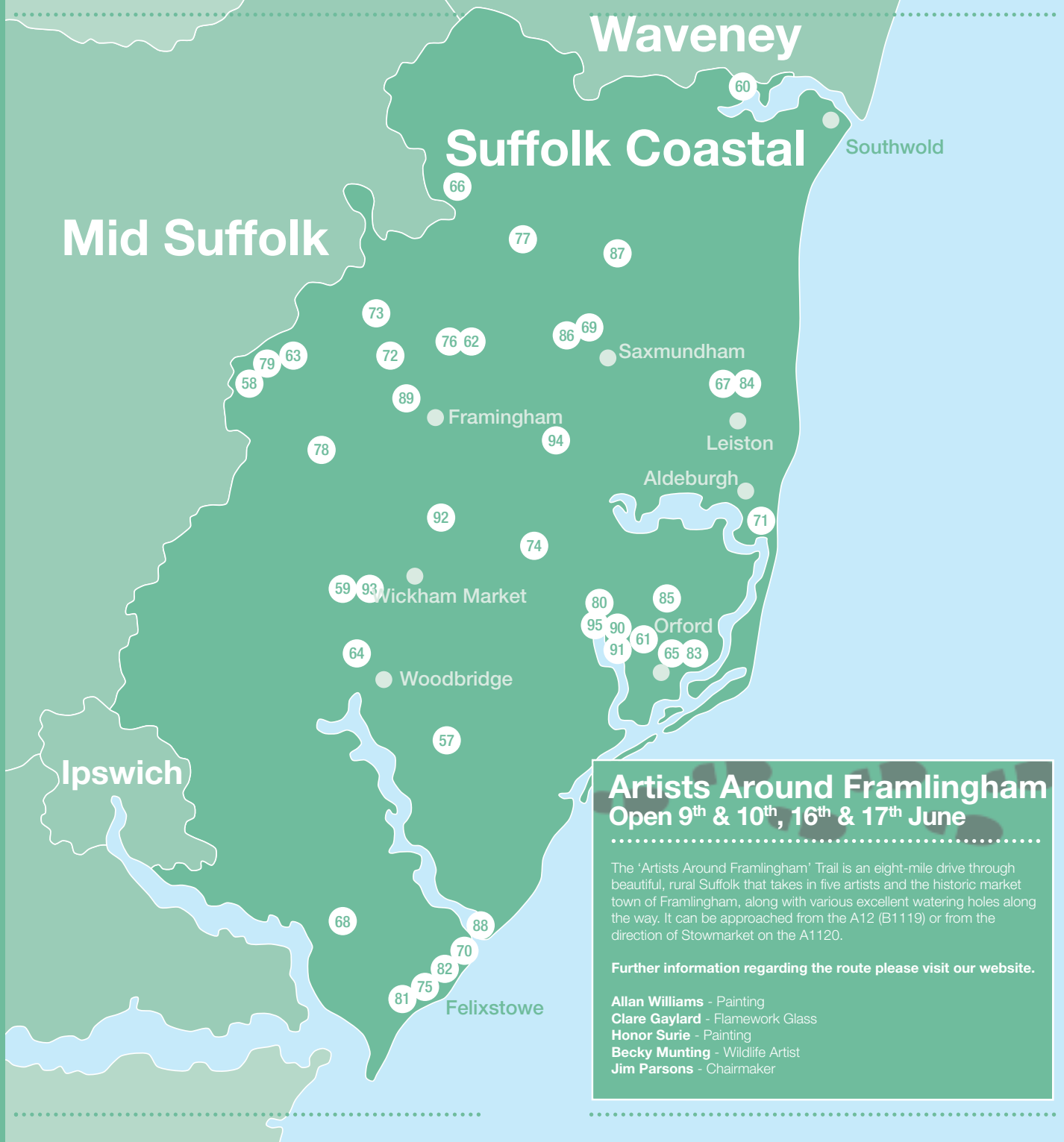
07931 247490 | [lishman@gmail.com](mailto:lishman@gmail.com) | [www.AzureArt.com](http://www.AzureArt.com)



## Ipswich Trail Open 9/10 June

Visit Adam Marsh's porcelain hand thrown ceramics, Karl Greene's stoneware and raku pottery and Marian Lishman's abstract paintings on the Ipswich Trail. Marian's studio is very near Holywells park where you can stop off for tea and cake in the Stables Cafe after your visit!

**Marian Lishman** - Painting  
**Adam Marsh** - Ceramics  
**Karl Greene** - Ceramics



## Artists Around Framlingham Open 9<sup>th</sup> & 10<sup>th</sup>, 16<sup>th</sup> & 17<sup>th</sup> June

The 'Artists Around Framlingham' Trail is an eight-mile drive through beautiful, rural Suffolk that takes in five artists and the historic market town of Framlingham, along with various excellent watering holes along the way. It can be approached from the A12 (B1119) or from the direction of Stowmarket on the A1120.

Further information regarding the route please visit our website.

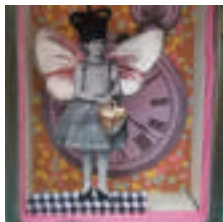
**Allan Williams** - Painting  
**Clare Gaylard** - Flamework Glass  
**Honor Surie** - Painting  
**Becky Munting** - Wildlife Artist  
**Jim Parsons** - Chairmaker



## 57 Ali Hollingsworth

Artboxes, ceramic, collage, acrylic

June 2/3, 9/10  
11am - 5pm



I enjoy making art boxes as this brings all my skills and experience together in one expression. Painting, sculpting, sewing, all come together with boot-fair finds to express what I would like to say about a particular subject. The art of Joseph Cornell is a huge influence on me. Visitors welcome throughout the year by appointment.

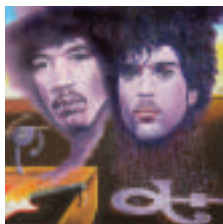
Leave Sutton Village heading for Shottisham and turn left at Forge Cottage (red-brick cottage). Follow SOS signs up sandy track. Park in area opposite cottage and follow entry signs. Optional parking opp. Farm Office if you prefer to walk.

Pinetree Cottage, The Broxtead Estate, Sutton, Woodbridge, IP12 3HP  
01394 411845 | aliholls248@gmail.com | www.alihollingsworth.com

## 58 Allan Williams

Painting

June 2/3, 9/10, 16/17  
11am - 5pm  
Framlingham Trail



Intense, atmospheric paintings of the eroding Suffolk coast. Commissions taken for landscapes and portraits of people, places and pets. One unique speciality is doing portraits in the style of famous artists e.g. David Bowie in the style of Picasso, Robin Williams in the style of Van Gogh. I also do portrait sculpture in clay.

The Mill House is a large orange building directly on the A1120 on the outskirts of Earl Soham. If approaching from Stowmarket direction, turn right into the drive immediately after the Earl Soham village and 30mph sign. If approaching from Framlingham/Saxstead direction, the A1120 takes you past the Victoria pub before turning sharp left and up a hill. It is the first left hand drive.

Mill House, Mill Hill, Earl Soham, Woodbridge, IP13 7RP  
07791 308675 | mail@allanwilliams.net | www.allanwilliams.net

## 59 Andrea Wright

Jewellery

June 2/3, 9/10, 16/17, 23/24  
11am - 5pm



Andrea completed her Fine Art degree in Printmaking at Winchester School of Art. She then worked in Galleries alongside teaching children's art groups for 7 - 11 year olds for the local council. During her time at the gallery she found a love of contemporary jewellery and joined the team at Justice Jewellery. Inspired by the work of 40 of the UK's top jewellery designers she embarked on a

silversmithing course and started to make her own designs into beautiful, simple, clean lined contemporary jewellery.

You will find the entrance to Hummingbird Studio at back of 4 Primrose Cottages which you will find by the children's play area on the Playing field.

Hummingbird Studio, 4 Primrose Cottages,  
The Street, Bredfield, Suffolk IP13 6BA

Andreawrightdesigns@hotmail.com | www.andreawrightdesigns.co.uk



## 60 Angelique Fraser-Mackenzie

Art textiles

June 2/3, 9/10,  
16/17, 23/24  
11am - 5pm



Angelique studied Design Crafts at UEA as a mature student and now works mostly as a printmaker and also enjoys watercolours. Textures and ambience are important parts of my work where mark making is done using specialist tools and colour, dashes and symbols are combined to convey memories, emotion and sounds.

My particular interest in printmaking is focused on collagraphs. I am fascinated when ink, damp paper and pressure all combine and magic is created !.

Please refer to website as location description is very detailed

Nova Scotia, Henham, Beccles, Suffolk NR34 8AQ  
07990 955392 | avfm11@yahoo.co.uk

## 61 Annie Turner

Ceramics

June 2/3  
11am - 5pm  
Sandling 8 Art Trail



Annie Turner's sculpture is imprinted with the river Deben's past and present, the cycles of nature and the interaction of man. These are, as she puts it 'objects that trigger the memory', as much collective memory as personal recollection.

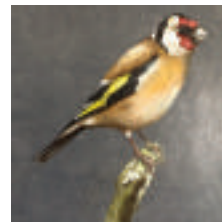
On the B104 follow the Signs to Orford. Just before the Junction to Orford you will see a Gate House on the right, sign posted Sudbourne park. Follow the signs Marked Black Smiths Forge. Forge stop Studio is at the rear of the Blacksmiths Forge. Follow Signs.

2 Forge Store Studios, Sudbourne Park, Woodbridge, IP12 2AJ  
01394 459729 | annieturner@mac.com

## 62 Becky Munting

Painting

June 9/10, 16/17  
11am - 5pm  
Framlingham Trail



Inspired by local animals and birds, I try to capture the spirit of each animal I see. I work primarily in oil paint, but have recently begun to create paper mache masks.

From Saxmundham A12, take the B1119 signed to Framlingham. Go through the village of Rendham, and continue for 2 miles. At a small crossroads, turn right to Cransford. As you enter the village, take the first right turn, signed Cransford Hall. Lyndhurst is a semi-detached house approximately half a mile down the road on the left. Studio entrance is through gates on right hand side of the drive.

Lyndhurst, Bruiyard Road, Cransford, Woodbridge, IP13 9PD  
07811 206114 | beckyart@hotmail.co.uk | www.beckymuntingart.co.uk

## 63 Clare Gaylard

Lampwork Glass

June 2/3, 9/10, 16/17, 23/24  
11am - 5pm  
Framlingham Trail



I design and create unique sculptures, vessels and wearable art by torching Murano Glass in an intense flame. My glass tells stories, celebrates colour, pattern, light and the beauty of the small. I develop my designs through sketching and painting what inspires me.

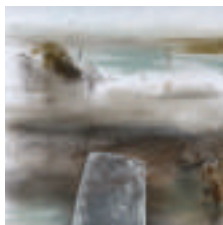
As you leave the main road at the 'Yew Tree Court' sign, look left and you will see a row of barns to your far left. Follow the drive left and you will end up between my studio and the main road.

Flameworks, Unit 2, Yew Tree Courtyard, Framlingham Road, Earl Soham, IP13 7SG  
07866 349861 | [cmgaylard@yahoo.com](mailto:cmgaylard@yahoo.com) | [www.claregaylard.net](http://www.claregaylard.net)

## 64 Colin Slee

Painting and Drawing

June 2/3, 9/10  
11am - 5pm



Dry and mixed media and acrylic. Images from nature – the sea, estuaries, skies, wide-open spaces and forests. Framed and unframed work for sale. Visitors welcome at other times by prior telephone appointment.

From A12 take A1152 (Woods Lane), turn right into Bredfield Road - second left Bury Hill, third right Fernhill Close. Left again, No.23 top right hand corner.

23 Fernhill Close, Melton, Woodbridge, IP12 1LB  
01394 385596 | [inscapes@tesco.net](http://inscapes@tesco.net)

# Sandling 5 Art Trail

## Open 16/17 June

This trail features artists and craftspeople in the Sandlings, part of the area of outstanding natural beauty (AONB), which provides inspiration for many of the works on display. The trail includes the rural villages of Chillesford and Sudbourne, including Sudbourne Park, and the riverside village of Orford.

**Ruth Seabrook** - Printmaking, textiles and drawing

**Lisa Berry** - Abstract artist

**Toby Mayhew** - Painting

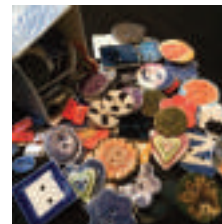
**Daphne Gardner** - Ceramics, drawing and painting

**Sudbourne Park Printmakers** - Original prints  
(see [sudbournepprintmakers.com](http://sudbournepprintmakers.com) for artists)

## 65 Daphne Gardner

Ceramics, drawing and painting

June 2/3, 16/17  
11am - 5pm  
Sandling 5 Art Trail  
Sandling 8 Art Trail



I recently set up a studio where I am developing my work as a potter currently specialising in porcelain buttons and ornamental pieces for the garden including water features.

Town Farm Estate is the second turning on the left as you enter Orford on the Ipswich Road, opposite the fire station. As you enter the turning it bends right and then there is a 90 degree left hand bend. First red brick house on the left. There is on-street parking within the estate.

Town Lodge, 13a Town Farm Estate, Orford IP12 2LS  
01394 450955 | [saoirse27@hotmail.co.uk](mailto:saoirse27@hotmail.co.uk)  
[www.aphnegardnerceramics.com](http://www.aphnegardnerceramics.com)



## 66 Fiona Fawcett

Kiln Formed Glass

June 2/3, 9/10, 16/17, 23/24  
11am - 5pm



I am a glass artist specialising in kiln formed glass using fusing, slumping, and casting techniques. My cast glass sculptures are cold-worked and hand polished. All my work is handmade making 2D and 3D artwork and functional pieces. I accept commissions and requests for exhibitions. I am a member of the Contemporary Glass Society.

Fired Glass Studio is located on the B1117 Laxfield to Heveningham road. I am about 2.5 miles from Laxfield and my studio is at The Haven Cottage next to red post box.

The Haven, The Green, Ubbeston, IP19 0HB  
01986 798025 | [fired.glass@yahoo.co.uk](mailto:fired.glass@yahoo.co.uk) | [www.firedglass.org](http://www.firedglass.org)

## 67 Frankie Cooper

Textile artist

June 2/3, 9/10, 16/17, 23/24  
11am - 5pm



Handmade, individual items of clothing, coats, dresses, shirts, skirts, bags and also beautiful dog coats. Unusual fabrics and decorations.

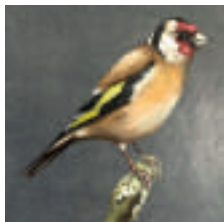
45A Abbey Road, Leiston, Suffolk IP16 4RE  
07527 728176 | [fm18farm@gmail.com](mailto:fm18farm@gmail.com)



## 68 Geraldine Stevenson Patey

new mediums

Not Opening



Although considered to be a Fine Art Artist, Geraldine continues to try out new mediums and materials whilst continuing to develop painting with Acrylics on Velour Pastel Paper. She enjoys painting with Oils on Velvet, watercolours and painting on recycled Glass. She is also developing a series of open cards some of which have already been printed.

Geraldine shares her skills and knowledge which combine Art with Music at her themed Art Days/workshops and uses music to support the themes and ideas.

01473 729306 | [lindenmuzik@btinternet.com](mailto:lindenmuzik@btinternet.com)  
[www.saa.co.uk/art/geraldinesp](http://www.saa.co.uk/art/geraldinesp)

## 69 Helen Armstrong Bland

Mixed Media

June 2/3, 9/10, 16/17, 23/24  
11am - 5pm



My work combines a variety of printmaking techniques to create 'Mixed Media Print Based Work' - using the more traditional relief processes of lino and wood, in combination with direct and screen printing, producing one off unique art works as well as small editions. My wider body of work ranges from Site Specific Installation, Artists Books, incorporating text, poetry, ephemera and found object.

Heading out of Saxmundham follow directions to Kelsale, go past the village turning and at the brow of the hill on the left there is a turning for 'Curlew Green', take this. Go all the way to the top of the road, (past Farm View), turn left into a single track dead end road and my studio/workshop is just in the back of the garden. Please note: at busy times you can park on the drive.

Farm View Studios, Curlew Green, Kelsale, Saxmundham IP17 2RA  
 07788 402879 | [www.sudbourneprintmakers.com/artists/helen-armstrong-bland](http://www.sudbourneprintmakers.com/artists/helen-armstrong-bland)

## 70 Helen Cassells

Weaving

June 2/3, 9/10  
11am - 5pm  
Felixstowe Trail



Come and discover the ancient art of pine needle weaving. Helen weaves pine needles around free form ceramics to create unique one-off pieces. Plus she is now creating a limited number of more traditional baskets using only pine needles. Art and nature entwined, from raw materials to finished pieces. Helen is happy to discuss all aspects of her work, so please feel free to ask.

Please park your car in one of the car parks at Felixstowe Ferry and follow the signs from the barrier at the boatyard entrance to Helen's shed. It is a pleasant short stroll with two cafes on the way!

Helen's shed, Felixstowe Ferry Boatyard, The Ferry, Felixstowe, Suffolk IP11 9RZ  
 01394 385596 | [inscapes@tesco.net](mailto:inscapes@tesco.net)

## 71 Henrietta Villiers

Printmaking

June 9/10, 16/17, 23/24  
11am - 5pm

I have been creating work using various printmaking techniques inspired by the local area.



36 Park Road, Aldeburgh, Suffolk IP15 5EU

07483 802702 | [henri@studiopond.com](mailto:henri@studiopond.com) | [www.studiopond.com/open-studio](http://www.studiopond.com/open-studio)

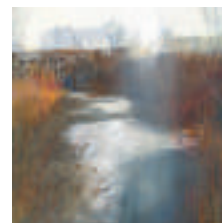


## 72 Honor Surie

Painter

June 9/10, 16/17, 23/24  
11am - 5pm  
Framlingham Trail

Enjoy exploring with acrylic and oils, works mainly based on landscapes.



At the top of Framlingham town opposite petrol station, the B1120 Badingham road, goes north, after the field on the left, opposite the sports club entrance, no. 5 is the second house on the left. A light painted weather boarded house, that's me.

5 Badingham road, Framlingham, Woodbridge IP13 9HS  
 07740 518 318 | [honor@honorsurie.co.uk](mailto:honor@honorsurie.co.uk) | [www.honorsurie.co.uk](http://www.honorsurie.co.uk)

## Felixstowe Art Trail

Open 2/3, 9/10 June

For your delight, Felixstowe art trail 2018 offers you glass art, ceramics, pine needle weaving and mixed media painting and photography. You will be welcome to chat to the artists about their work and explore their studios with pieces on display. There will be some demonstrations for you to see during your visit. There are plenty of places for refreshment as you travel along the trail and car parking at or near to the artists' studios. We look forward to welcoming you.

Mary Wyatt - Ceramics

Naomi Brangwyn - Glass artist

Helen Cassells - Pine needle weaver/ ceramics

Jim Nind - Painter/photographer

## 73 Jayne Stansfeld

Textiles



I am passionate about colour, inspired by Suffolk Landscapes and quirky things. Interested in the process of designing and making and playful approaches. To art in my own work and collaboratively.

Not Opening

01728 723495 | [jayne@jaynestansfeld.co.uk](mailto:jayne@jaynestansfeld.co.uk) | [www.magpieandme.co.uk](http://www.magpieandme.co.uk)

## 74 Jenny Partridge

Watercolours and book illustration



Author and illustrator of over 15 childrens books and winner of the "Critici in Erbar" book prize at the Bologna book fair as illustrator. As painter, creator of "Kitchen Picture" series recipe paintings and flower studies. Work has been shown widely though out europe books printed in French, Dutch, Japanese etc. Characters reproduced by Wedgewood. Jenny now lives and works in Tunstall Suffolk.

June 2/3, 9/10, 16/17,  
11am - 5pm

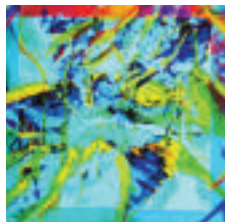
From Woodbridge follow B1069 to Tunstall, on passing village sign studio is on right slightly set back and opposite pond and bus lay-by to the left. Coming from Snape studio is on left. There will be an A board with poster directly outside studio and parking for three cars.

Romany Studio, Woodbridge Road, Tunstall. Nr Snape Suffolk IP12 2JE  
01728 688264



## 75 Jim Nind

Mixed Media Painting & Photography



My current work bridges the boundaries between painting and photography. I engage in digital play with photographic images and embody these within painted compositions using acrylic paint as the main medium but also adding in a range of other media. My work draws upon the experience of 'being out there' within the 'natural' environment and the ideas embodied within the Deep Ecology

June 2/3, 9/10  
11am - 5pm  
Felixstowe Trail

movement.

My studio is to the rear of the back garden at 99 Ranelagh Rd, but is best accessed via the back alley on York Road. Look out for the painted prayer flags showing the way.

99 Ranelagh Road, Felixstowe, IP11 7HU  
07914 648655 | [jim.autoverse@gmail.com](mailto:jim.autoverse@gmail.com)

## 76 Jim Parsons

Chairmaker

June 9/10, 16/17  
11am - 5pm  
Framlingham Trail



I make all types of furniture, but mostly chairs of my own design. I use a variety of traditional and modern techniques and source my wood locally. Commissions undertaken.

From Saxmundham A12, take the B1119 signed to Framlingham. Go through the village of Rendham, and continue for 2 miles. At a small crossroads, turn right to Cransford. As you enter the village, take the first right turn, signed Cransford Hall. Lyndhurst is a semi-detached house approximately half a mile down the road on the left. Studio entrance is through gates on right hand side of the drive.

Lyndhurst, Bruiyard Road, Cransford, Woodbridge, IP13 9PD  
07515 258807 | [jim-parsons@hotmail.co.uk](mailto:jim-parsons@hotmail.co.uk)

## 77 Jon Warnes

Wood and willow craftsman

June 9/10, 16/17, 23/24  
11am - 5pm



I make a range of turned bowls using hardwoods such as Ash, Laburnam and Cherry and hand carve a variety of spoons from eating to serving. I also weave willow, usually on a large, sculptural scale and make small moving "toys" when I get time.

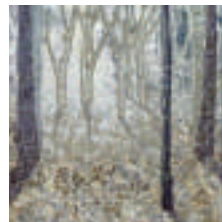
Travelling north on the A12 turn sharp left at Stratford St. Andrew after the garage. Follow the road through the village and carry on taking the right turn. Follow the road past the main entrance to White House Farm and then turn right onto the farm track, drive along until you see the wooden workshops and a sign for studio parking. You will see my workshop nearby.

White House Farm, Great Glemham IP17 2LS  
07732 799072 | [jon.warnes@zen.co.uk](mailto:jon.warnes@zen.co.uk) | [www.jonwarnes.co.uk](http://www.jonwarnes.co.uk)

## 78 Kingsley Thompson

Textile Artist

June 23/24  
11am - 5pm



My work involves a number of techniques, including dyeing, printing and stitch. Having lived in Devon and Suffolk, two beautiful areas of the country, my work is based on the natural, organic world.

From Framlingham or Brandeston, first turn right past the pub, (going out of the village towards Easton). First house on left, opposite the thatched cottages. From Wickham Market, house on right by the bridge, opposite Thatched cottages.

Bridge Farm, Kettleburgh, Woodbridge, IP13 7JS  
[kingsley\\_t51@hotmail.com](mailto:kingsley_t51@hotmail.com) | [www.kingsleyt.com](http://www.kingsleyt.com)

## 79 Lin Carter

Weaver and textile designer

June 16/17, 23/24  
11am - 5pm



Weave is the foundation of my current work, though my passion is for all things 'textile'. At my studio, four looms are used to produce bespoke interior pieces and fashion accessories - everything from woollen rugs to silk scarves. Natural fibres dominate my work, although I use experimental yarns to enhance designs. The intention is always to create contemporary pieces using hand-made

and traditional techniques.

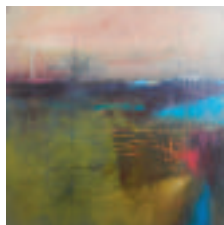
Suffolk Threads is located on the Earl Soham Business Centre off The Street (A1120), signposted by the Earl Soham Community Primary School. Follow signs to the Business Centre where parking is located behind the veterinary surgery. The studio is located on the first floor of the former barn (above Doves Clothing). Additional directions through the building will be displayed on the entrance door.

Suffolk Threads, Unit 12, Earl Soham Business Centre, Earl Soham Suffolk IP13 7SA  
07970 285566 | [lin@suffolkthreads.co.uk](mailto:lin@suffolkthreads.co.uk) | [www.suffolkthreads.co.uk](http://www.suffolkthreads.co.uk)

## 80 Lisa Berry

Abstract artist

June 2/3, 16/17,  
11am - 5pm  
Sandling 5 Art Trail  
Sandling 8 Art Trail



At present I am working in acrylic paint on deep edge canvas ranging in size from 20 cm square to 120 cm square. My images are abstract and semi abstract. I am happy to open my studio at other times by prior telephone or email appointment.

From Woodbridge follow B1069 to Tunstall, on passing village sign studio is on right slightly set back and opposite pond and bus lay-by to the left. Coming from Snape studio is on left. There will be an A board with poster directly outside studio and parking for three cars.

13 Brick Kiln, Chillesford, Woodbridge IP12 3PX  
01394 450498 | [lisaberry2014@hotmail.co.uk](mailto:lisaberry2014@hotmail.co.uk)  
[www.lisaberryart.wix.com/lisa-berry-art](http://www.lisaberryart.wix.com/lisa-berry-art)

## 81 Mary Wyatt

Ceramics

June 2/3, 9/10, 16/17, 23/24  
11am - 5pm  
Felixstowe Trail



My sculptures explore shape and balance. The sculptures are hand-built and capture human figures, seascapes and animals suspended in movement. I am currently experimenting with raku glaze firing.

Tower Road is near the Town Centre and seafront behind St. John's Church

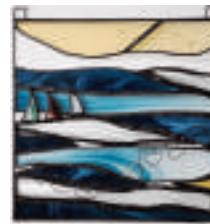
4 Tower Road, Felixstowe, IP11 7PR  
01728 671033 | [marywyattart@gmail.com](mailto:marywyattart@gmail.com) | [www.marywyatt.co.uk](http://www.marywyatt.co.uk)



## 82 Naomi Brangwyn

Glasswork

June 2/3, 9/10  
11am - 5pm  
Felixstowe Trail



Inspired by nature, my work celebrates glass, colour and texture. Using traditional stained glass techniques but mixing materials, layering the glass and leaving gaps in between. Commissions regularly undertaken. Workshops available.

Situated on the road to Felixstowe Ferry, just past the Spar supermarket, on the main road between St George's Road and Western Avenue.

17 Cliff Road, Felixstowe, Suffolk, IP11 9PJ  
07811 065868 | [email@naomi-brangwyn.co.uk](mailto:email@naomi-brangwyn.co.uk) | [www.naomi-brangwyn.co.uk](http://www.naomi-brangwyn.co.uk)

## 83 Nicola Atchley

Printmaking

June 9/10, 16/17, 23/24  
11am - 5pm  
Sandling 8 Art Trail



My prints are of old tools, and other pieces of metal I find discarded along the Suffolk coast. I am interested in the surface textures of the aged metal and it is this I seek to represent through the process of etching.

Also dry points, lino and wood cuts, again from found wood. I make artists books recording journeys on the Suffolk Coast and abroad.

Take B1084 towards Orford. Drive into the village and The Orford Crafts Centre is on the left immediately before the Kings Head pub, opposite the Orford General Stores. The Old Hayloft studio is upstairs in The Crafts Centre.

The Old Hayloft, Orford Crafts Centre, Front Street, Orford,  
Woodbridge IP12 2LW  
07714 692846 | [nicola@atchley.co.uk](mailto:nicola@atchley.co.uk) | [www.nicolaatchley.co.uk](http://www.nicolaatchley.co.uk)

## 84 Patricia Lomax

Abstract Painter

June 2/3, 9/10, 16/17, 23/24  
11am - 5pm



Free and expressive abstract work often derived from the landscape around me. Mature paintings which I have exhibited locally, nationally and internationally for many years.

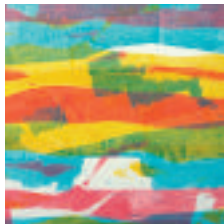
Approaching Leiston from Saxmundham turn L. at traffic lights into Station Rd. Continue towards Theberton to find Studio on left after a few hundred yards

45a Abbey Road, Leiston IP16 4RE  
01728 768846 | [patricialomax@outlook.com](mailto:patricialomax@outlook.com) | [www.patricialomax.co.uk](http://www.patricialomax.co.uk)



## 85 Ruth Seabrook

### Printmaking



Over the last 20 years I have found more time to study art theory and its practical applications. At present I am exploring printmaking, textiles and life drawing. I believe that the most essential element in creating art is to enjoy the process.

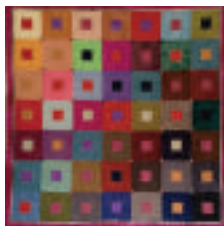
June 2/3, 16/17  
11am - 5pm  
Sandling 5 Art Trail  
Sandling 8 Art Trail

From Woodbridge take the B1084 towards Orford. Turn left to Sudbourne at five cross ways. Take the second turning on right down School Road. Ashmeads is about quarter of a mile on the left. From Snape take the turning to Orford. Once in Sudbourne, School Road is first on left. Ashmeads is in front of Captains Wood. (SWT).

Ashmeads, School Road, Sudbourne, IP12 2BE  
01394 459720 | [rcseabrook@gmail.com](mailto:rcseabrook@gmail.com) | [www.ruthseabrook.co.uk](http://www.ruthseabrook.co.uk)

## 86 Sally Goodacre

### Textile Art



I am a textile artist working with fabric, paint and stitch. I teach weekly Patchwork and Quilting classes from my studio's in our barn complex and also run one day workshops covering dying and textile art. I am also an active member of The Majyk Scraps Textile Group.

June 2/3, 9/10, 16/17, 23/24  
11am - 5pm

From the A12 take the B1119 towards Rendham. After 1 mile on the second sharp bend, take the small road ahead towards Carlton Meres. Moat House Farm is the first house on the right after the caravan park turning. You will find the studio in the barn complex as you enter the drive to the house.

Moat House Farm, Rendham Road, Carlton, Saxmundham, Suffolk IP17 2QN  
01728 602228 | [sally@goodacres.com](mailto:sally@goodacres.com)

## Sandling 8 Art Trail Open 2/3 June

This varied trail features artists and craftspeople in the Sandlings, part of the area of outstanding natural beauty (AONB), which provides inspiration for many of the works on display. The trail includes the rural villages of Chillesford and Sudbourne, including Sudbourne Park, and the riverside village of Orford.

**Annie Turner** - Ceramist  
**Steven Wills** - Ceramics  
**Nicola Atchley** - Printmaking, Artists books  
**Ruth Seabrook** - Printmaking, textiles and drawing  
**Lisa Berry** - Abstract artist  
**Toby Mayhew** - Painting  
**Daphne Gardner** - Ceramics, drawing and painting  
**Sudbourne Park Printmakers** - Original prints  
(see [sudbourneprintmakers.com](http://sudbourneprintmakers.com) for artists)

## 87 Simon Turner

### Coastal Artist

Simon combines wooden panels and acrylic paint to produce sea and landscapes inspired by the Suffolk Coast. His work is exhibited in various locations on the Suffolk coast and in London. His studio is a wonky barn in the lovely village of Yoxford and, weather permitting, he works in situ on the beaches and amongst the reedbeds along the coast.

June 2/3  
11am - 5pm



Look out for the little track next to the Village Hall on Old High Road or if you are coming from the village then we are behind the church. Follow the signs to the wonky black barn.

5 Park Place, Yoxford IP17 3HN  
07957 258310 | [simonturnersart@gmail.com](mailto:simonturnersart@gmail.com)  
[www.twelfefurniture.blogspot.co.uk](http://www.twelfefurniture.blogspot.co.uk)

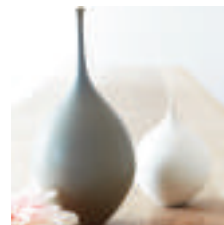


## 88 Sophie Cook

### Ceramics

I throw my vessels on the wheel using porcelain and then refine the shape by turning (carving) them when they are dry. The shapes work best in groups when they become a still-life with different forms and colours. This year I've been working on an installation for the Fontenay hotel, Hamburg and an 100 piece installation for a luxury cruise liner.

June 9/10  
11am - 5pm



Drive through Bawdsey and look out for an old disused gate and two coral outbuildings with signs for the Radar Museum; then drive up the avenue.

The Belltower, Bawdsey Manor, Woodbridge, IP12 3BH  
07880 524514 | [info@sophiecook.com](mailto:info@sophiecook.com) | [www.sophiecook.com](http://www.sophiecook.com)

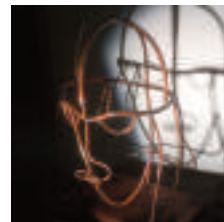


## 89 Spadge Hopkins

### Metal Sculpture

Steel and copper sculpture sometimes conceptual, others partially figurative, many featuring movement, light and shadow. Machines, icons of music and Anglo Saxon themes are areas being explored as well as producing expressive figures and amusing animals from found tools.

June 2/3, 9/10, 23/24  
11am - 5pm



Approaching Framlingham from Saxtead on the B1119 the drive is on the right opposite the rumble strip sign. Or leaving Framlingham past Thomas Mills High School on your right, the cottage is the second on on the left past the de-restriction signs. There is a bicycle sculpture in the front garden and possibly a giant easel and pencils!

2 Black Barn Cottages, Saxtead Road, Framlingham, Suffolk IP13 9PU  
07831 843922 | [spadge.hopkins@gmail.com](mailto:spadge.hopkins@gmail.com)  
[www.facebook.com/SpadgeArt/](http://www.facebook.com/SpadgeArt/)



## 90 Steven Will

### Ceramics

June 2/3  
11am - 5pm  
Sandling 8 Art Trail



Located on the Suffolk coast I am making pots rooted in the local landscape. Developing a colour palette and sourcing natural materials (mud, clays and wood ash) to decorate thrown and cast porcelain.

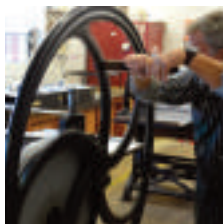
Take turning to Sudbourne Park just outside Orford (off the B1084 Woodbridge to Orford road). Follow the private road down past the large lawn with two big urns and continue past converted stables. After about 100m turn left at the big blue/grey sign towards the Blacksmiths Shop. Go through 'Bothy Yard' and park near the small octagonal seed store and follow signs to No2 Blacksmiths Shop

2 Blacksmiths Shop, Sudbourne Park, Woodbridge, IP12 2AJ  
07905 459922 | [stevenwill@outlook.com](mailto:stevenwill@outlook.com) | [www.stevenwill.co.uk](http://www.stevenwill.co.uk)

## 91 Sudbourne Park

### Printmakers

Not Opening



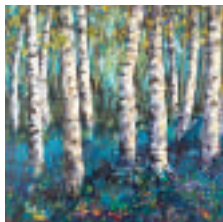
Sudbourne Park Printmakers is a co-operative of about 30 artist printmakers, sharing the well equipped workshop at Bothy Yard, Sudbourne Park to make original prints using a variety of techniques including collagraphs, etching, linocut, screen printing and woodcuts.

01394 450393 | [john@sudbourneprintmakers.com](mailto:john@sudbourneprintmakers.com)  
[www.sudbourneprintmakers.co.uk](http://www.sudbourneprintmakers.co.uk)

## 92 Susan Whatling

### Painting and printmaking

June 9/10, 16/17  
11am - 5pm



Art and design consistently contribute to my life, offering me an outlet, giving a voice and raising hopes for alternative possibilities. It offers me a unique way of sharing in the world.

From the High Street in Wickham Market, turn into Spring Lane, Barhams Way is on the right. Studio is accessible via the side gate.

57 Barhams Way, Wickham Market, Woodbridge, Suffolk IP13 0SR  
01728 748271 | [swhatling@wildthymestudio.com](mailto:swhatling@wildthymestudio.com) | [www.wildthymestudio.com](http://www.wildthymestudio.com)

## 93 The Distressed Artist

### Studio/Gallery

June 2/3, 9/10, 16/17, 23/24



Taking inspiration from the Suffolk countryside and a love of all things sea and sky, The Distressed Artist™ uses acrylic on canvas and watercolour as her current mediums.

Forever open to development of technique and use of different mediums, she spends her days immersed in her art and the countryside that inspires it.

Park at Bredfield Village Hall and head across the village field to the play area. The studio can be found through the first gate.

Hummingbird Studio, 4 Primrose Cottages,  
The Street, Bredfield IP13 6BA  
07595 498 404 | [bon@distressedartist.co.uk](mailto:bon@distressedartist.co.uk) | [www.distressedartist.co.uk](http://www.distressedartist.co.uk)



## 94 The George Farnham Gallery

### Gallery

June 2/3, 9/10,  
16/17, 23/24



A warm and inviting gallery slightly offset from the High Street in Saxmundham that represents the eclectic nature of the owners. The gallery focuses mainly on exhibiting local Suffolk artists work but also artists in East Anglia as a whole and even further afield i.e. London. Exhibitions change every 6-8 weeks interspersed with a 2 week exhibition. Private views are held on Sunday from 1-4 pm

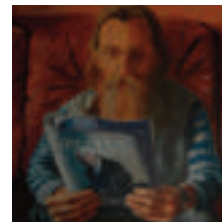
Opposite the East of England Pharmacy in the High Street. 2 hour limited free parking is available in either Tesco or Waitrose car parks.

6A High Street, Saxmundham IP17 1JZ  
01728 603 308 | [contact@thegeorgefarnhamgallery.uk](mailto:contact@thegeorgefarnhamgallery.uk)  
[www.thegeorgefarnhamgallery.uk](http://www.thegeorgefarnhamgallery.uk)

## 95 Toby Mayhew

### Painting

June 2/3, 16/17  
11am - 5pm  
Sandling 5 Art Trail  
Sandling 8 Art Trail



I work mostly with acrylics, sometimes with oils on canvas or board. I enjoy doing portraits and studies of people, also some local landscapes, still life and abstract pictures. This year I am keen to paint more directly from life, less using photos. Any portrait commissions very welcome. I would be happy to arrange visits at other times by phone.

Chillesford is on the B1084 between Woodbridge and Orford, just after Butley. Ours is the thatched cottage up the track directly opposite the Froize Inn car park. Please note that wheelchair access is partial, not complete.

13 Brick Kiln Cottages, Chillesford, Woodbridge, IP12 3PX  
07919 441351 | [tobymhw@gmail.com](mailto:tobymhw@gmail.com)





Mid Suffolk

Suffolk Coastal

# Waveney

Bungay

Beccles

Oulton

Lowestoft

Kessingland

Halesworth

102

97

103

106

105

99

98

96

101

104

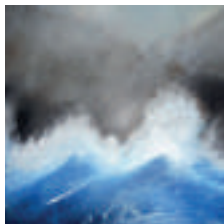
100



**96 Bob Wild**

Drawing and painting

Not Opening



I make drawings and paintings mainly derived from landscape and the human figure.

01502 731469 | robertwild147@btinternet.com

**97 Boo Compton**

Abstract Artist

June 2/3, 9/10, 16/17, 23/24  
11am - 5pm

My paintings are inspired by my desire to create strong, visual impact through layering, texture and colour. I ran my own Graphics Studio in London for 15 years before moving to Suffolk and expanding to works in mixed media including acrylics and oils / oil bars. As a part of the Wingfield Barns Hub, I am exhibiting with 6 other exciting local artists; the show not to be missed!

Close to Fressingfield, Wingfield Barns are located between Harleston and Stradbroke in the beautiful village of Wingfield, very near to the De La Pole public house. The Barns are sign-posted and there is ample free car parking available.

Wingfield Barns, Church Road, Wingfield, Suffolk, IP21 5RA

01379 854115 | boo.compton@gmail.com

www.facebook.com/boocompton.art.1

**98 Fiona Shreeve**

Ceramics, sculptural with print

June 2/3, 9/10, 16/17  
11am - 5pm

My work is influenced by Brutalist Architecture. I make sculptural forms with underglaze transfer prints both are inspired by images of buildings like The Barbican and Park Hill in Sheffield or iconic buildings on the Southbank.

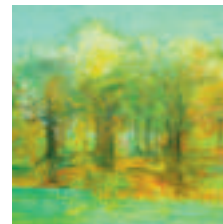
My studio is in Marsh Lane directly opposite the Duke Head P.H in Somerleyton.

9 Marsh Lane, Somerleyton, Suffolk NR32 5QX

01502 730837 | iona@fionashreeve.com | www.fionashreeve.com

**99 Hilary Barry**

Oil Painting

June 2/3, 9/10, 16/17  
11am - 5pm

My work in London was based on my memories of a land of mountains, mist and rain: the Wales of my youth. I am now discovering the atmosphere and sense of place in Suffolk. My pallet has become lighter and brighter. I continue to work with oil on canvas, relying on my visual memory and imagination.

Turn off A12, following signs for Africa Alive. Continue onto Church Road until you reach the beach. Follow road right after Sailor's Home, then right again after Waterfront Restaurant. Road bends left: Copperfields is the large blue/grey house on the right. Parking on the drive.

Copperfields, Beach Road, Kessingland, NR33 7RW

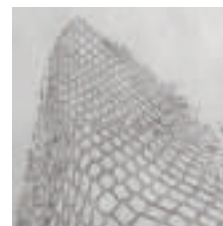
07800 643117 | hilary@hilarybarryartist.com | www.hilarybarryartist.com

**100 Hugh Davies**

Printmaker @ paper-works\*

June 16/17, 23/24  
11am - 5pm

I am interested in drawing and mark making on paper as a means of exploring and analysing form and space. Subjects are mainly based on the local urban and marine environment. I use a range of printmaking techniques, including linocut and drypoint, as a means of moving beyond observation into abstraction.



Travelling North on A47 from Lowestoft Town Centre, after Belle Vue Park take right turn into Corton Road. Lyndhurst Road is first on the right.

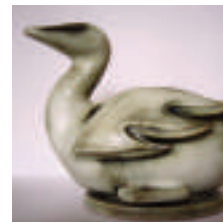
29 Lyndhurst Road, Lowestoft, Suffolk NR32 4PD

01502 580912 | mail@paper-works.co.uk | www.paper-works.co.uk

**101 Jennie Wild**

Ceramics

I make decorative items, mostly boxes and plaques, seeking inspiration from the animals and plants seen around me in the local environment.



From the B1074 enter The Street at Somerleyton Green. Turn into Station Road on the left. Then turn right into Morton Peto Close. Turn right at the end of the close.

8 Morton Peto Close, Somerleyton, Suffolk NR32 5QY

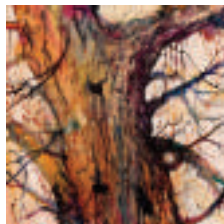
01502 731469 | jennie.wild@btinternet.com



## 102 John Parker

Watercolours & Oils

June 2/3, 9/10, 16/17, 23/24  
11am - 5pm



John Parker – Tutor and Lecturer in Fine Art – runs weekly Art Classes at Wingfield Barns on Tuesday's and Capel St. Mary on Thursday's. Painting professionally since 1990. BA (Hons) NUA 2006, DTLLS (Dip.) CCN 2009. Working in both Watercolour and Oils, enjoy's experimentation with diverse materials continually searching for individual personal artistic development with a high quality finish.

Studio 4 – Studio & Gallery at Wingfield Barns, Church Road, Wingfield Suffolk IP21 5RA Follow brown signs to Wingfield Barns. disabled parking outside studio 4 – ample on site parking for all visitors.

47 – 49 Church Street, Eye IP23 7BD

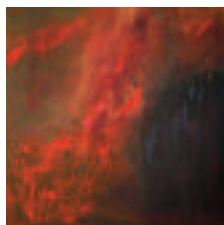
07442 491734 | [artistjparker@gmail.com](mailto:artistjparker@gmail.com) | [www.johnsartclass.com](http://www.johnsartclass.com)



## 103 Joy Wilson

Abstract Artist

June 2/3,  
11am - 5pm



Suffolk born artist working mainly in oil, my inspiration comes from the East Anglian landscape I use strong colour and marks my work is instant and fearless! I exhibit all round East Anglia in solo or group shows.

Take road off London Road signposted Roman Way approx 100 yards turn left into Gainsborough Drive I am on the left number 25

25 Gainsborough Drive Halesworth Suffolk IP19 8TL

07814370011 | [joy.wilson1@btinternet.com](mailto:joy.wilson1@btinternet.com)

## 104 Lisa Hurcum

Print Maker @ paper-works\*

June 16/17, 23/24  
11am - 5pm



Working with Linocut printing gives me the ability to retain a spontaneity and immediacy to the images I create. My inspiration comes from the domestic and the everyday, both observed directly from life and from the imagined details of the short stories that I write.

Leaving lowestoft town centre northwards on A47, past Belle Vue park, take a right into Corton Road and Lyndhurst Road is the first turning on the right.

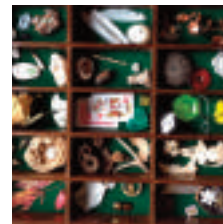
29 Lyndhurst Road, Lowestoft NR32 4PD

01502 580912 | [lisahurcum@gmail.com](mailto:lisahurcum@gmail.com) | [www.paper-works.co.uk](http://www.paper-works.co.uk)

## 105 Nina Roffey

Mixed Media

June 9/10, 16/17  
11am - 5pm



New works of sculpture and boxed curiosities. The "found object" being my craze still!

From Beccles town centre take Lowestoft road to Worlingham. After village sign take first left Park Drive studio on the right halfway down. From Lowestoft turn left into Worlingham village, pass the church, first right then left at T junction into Park Drive.

52 Park Drive, Worlingham, Beccles, NR34 7DL

01502 715118 | [nina.roffey@btinternet.com](mailto:nina.roffey@btinternet.com) | [www.ninaartmaker.info](http://www.ninaartmaker.info)

## 106 Suffolk Artlink

Studio/Gallery

June 9/10  
11am - 5pm



Suffolk Artlink is a participatory arts charity. We develop and deliver inclusive arts programmes in communities that bring skills, support networks, confidence and joy to people in the East. Our creative projects aim to help people transform their lives through the arts, and are delivered in places including community centres, hospitals and hospices, residential homes, refuges and schools.

There are several town-centre car parks which are within easy walking distance of The Cut, and the station is also just minutes away on foot. For more details, visit [www.newcut.org/find-us](http://www.newcut.org/find-us).

Suffolk Artlink at The Cut, 8 New Cut, Halesworth IP19 8BY

01986 873955 | [enquiries@suffolkartlink.org.uk](mailto:enquiries@suffolkartlink.org.uk) | [www.suffolkartlink.org.uk](http://www.suffolkartlink.org.uk)



Artwork courtesy of Louise Chapman

## Mill Tye Gallery

Art Gallery

June 2/3, 9/10, 16/17, 23/24  
Artists Around Sudbury  
11am - 4pm



A unique destination for Contemporary Art, Sculpture, Handmade Pottery, Gifts and Cards. The Gallery is set by the idyllic River Stour in Great Cornard. The historic mill building, which traces its roots back to the Domesday Book of 1085. The Gallery hosts monthly exhibitions of local contemporary artists, printmakers, sculptors and potters.

Leaving Sudbury on the Cornard/Bures Road, follow through Great Cornard passing two roundabouts and Bakers Mill will be found on the right hand side opposite the King's Head Pub and just before the Motorists Discount shop. Turn right into Mill Tye. Parking is in the car park before the single track railway level crossing. The gallery is a short walk opposite the Mill Pond, before the river, in the old Bakers Mill Building.

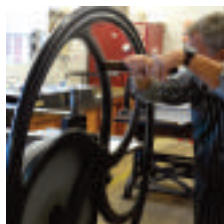
3 Cornard Mills, Mill Tye, Great Cornard, Sudbury, Suffolk CO10 0GW  
01787 376796 | milltye@icloud.com | www.milltyegallery.co.uk



## Sudbourne Park Printmakers

Printmaking

June 2/3, 16/17  
Sandling 5 and 8 trail  
11am - 5pm



Sudbourne Park Printmakers is a co-operative of about 30 artist printmakers, sharing the well equipped workshop at Bothy Yard, Sudbourne Park to make original prints using a variety of techniques including collagraphs, etching, linocut, screen printing and woodcuts.

Signposted off the Orford Road (B1084).

4 Bothy Yard, Sudbourne Park, Woodbridge, IP12 2AJ  
01394 450393 | john@sudbourneprintmakers.com |  
www.sudbourneprintmakers.co.uk



## The George Farnham Gallery

Gallery

June 2/3, 9/10, 16/17, 23/24  
11am - 5pm



A warm and inviting gallery slightly offset from the High Street in Saxmundham that represents the eclectic nature of the owners. The gallery focuses mainly on exhibiting local Suffolk artists work but also artists in East Anglia as a whole and even further afield i.e. London. Exhibitions change every 6-8 weeks interspersed with a 2 week exhibition. Private views are held on Sunday from 1-4 pm

Opposite the East of England Pharmacy in the High Street.  
2 hour limited free parking is available in either Tesco or Waitrose car parks.

6A High Street, Saxmundham IP17 1JZ  
01728 603 308 | contact@thegeorgefarnhamgallery.uk  
www.thegeorgefarnhamgallery.uk

## Members

### Val Bright-Jones

Painting

artistval@icloud.com

### Chris Deacon

Mosaic

chris\_deacon@btconnect.com

### Emma Garnham

Fused Glass

emmagarnhamglass@yahoo.com

### Bev Howe

Acrylic paintings on paper

bev.baddeley@googlemail.com

### Ivan Robinson

Painting and Photography

mail@delaterre.eu

### Gilly Rochester

Drawings, paintings, mixed media

gillyrochester@gmail.com

### Jayne Stansfeld

Textiles

jayne@jaynestansfeld.co.uk

### Geraldine Stevenson

new mediums

lindenmuzik@btinternet.com

### Bob Wild

Drawing and painting

robertwild147@btinternet.com

### Jennie Wild

Ceramics

jennie.wild@btinternet.com

### Pamela Yeend

Abstract Artist

pmyeend@aol.com

These artists will not be opening their studios to the public this year as part of the Open Studio Event. Further details and examples of their art can be found on our website: [www.suffolkopenstudios.org](http://www.suffolkopenstudios.org)

"I write as a new member to Suffolk Open Studios but in this short time I am so pleased to be involved with such 'inspiring' artists. Over the years and since leaving art school I have occasionally joined painting groups but since meeting these lovely artists in the SOS 'hub', I feel really inspired by their their amazing talents"

Diana Kearsley

## Committee 2018

Chairwoman

**Cally James**

01284 827136 | potter\_43@hotmail.co.uk

Members Secretary

**Emma Garnham**

07902011559 | emmagarnhamglass@yahoo.com

Treasurer

**Cherrie Stevens**

07577 828666 | cherrie55uk@yahoo.co.uk

Web Editor

**Marian Lishman**

07931 247490 | lishman@gmail.com

Directory distribution Co-ordinator

**Allan Williams**

07791 308673 | mail@allanwilliams.net

Facebook editor

**Clare Gaylard**

07866 349861 | cmgaylard@yahoo.com

Press Officer'

**Miles Barry**

07931 334366 | mb@mbarry.org.uk

Suffolk Artlink co-ordinator

**Lucy Perry**

07779 267623 | lucyperryart@gmail.com

## SOS Area Leaders

Babergh

**Dominica Yannaghas**

enquiries@foofsterdesigns.com

Mid Suffolk

**Leon Petterson**

leon4pots@talktalk.net

Ipswich & Suffolk Coastal Central

**Karl Greene**

karlydarling@gmail.com

Suffolk Coastal North

**Patricia Lomax**

patricialomax@outlook.com

St. Edmundsbury

**Evelyn Polk**

polkevelyn@yahoo.co.uk

Waveney

**Hugh Davies**

hugh@daviesmarine.co.uk

## Join us



Are you an artist? Then why not join us and enjoy the benefits of being a member of the leading arts group in the county.

There are only two conditions for full membership, you must be a committed maker / exhibitor of quality originals works of art and your studio must be located in Suffolk.

The options for membership are simple:

**Full members:** participate in our Open Studios event in June and have an SOS website portfolio.

**Associate members:** stay connected with your own portfolio on the Suffolk Open Studios website.

For full details of the membership options and fees please go to:

[www.suffolkopenstudios.org](http://www.suffolkopenstudios.org)

[www.facebook.com/suffolkopenstudios](https://www.facebook.com/suffolkopenstudios)

[www.twitter.com/suffopenstudios](https://www.twitter.com/suffopenstudios)

Join as a friend of Suffolk Open Studios (SOS) or sign up for our newsletter at:

[www.suffolkopenstudios.org](http://www.suffolkopenstudios.org)

## Advertise in this directory in 2019

Suffolk  
OPEN STUDIOS



**Target the arts community**

- over 20,000 copies of this free directory are distributed throughout Suffolk
- a long shelf life means that this directory is used as a year-long resource
- reaches art lovers way beyond the borders of the county
- reasonable rates: e.g. £125 buys one third of a page

Contact Chairwoman at [potter\\_43@hotmail.co.uk](mailto:potter_43@hotmail.co.uk)

# suffolkartlink

As part of the aims for Suffolk Open Studios, we look to develop working partnerships across art communities, to explore and support education, training, and complimentary activities. With this in mind we are delighted to say that this year we have created a special partnership with Suffolk Artlink.

Suffolk Artlink are a participatory arts charity developing and delivering inclusive arts programmes in communities, bringing change to people's lives. As an artist we know the valuable role art plays in our lives so it seemed fitting to try and help Suffolk Artlink as we celebrate our own art this summer.

We are hoping to raise awareness of the excellent work Suffolk Artlink does whilst at the same time raise funds for them. You

will have the chance to win original artworks by Suffolk Open Studio artists in the prize draw at our 'Inspirations' exhibition at The Apex in April/May. Tickets for the prize draw will also be available to purchase via [www.suffolkartlink.org.uk](http://www.suffolkartlink.org.uk). This donation will go straight to Suffolk Artlink and directly support their work. We very much hope that you will get involved, purchase a ticket and help us support this superb local Charity. Good Luck!



## What activities do Suffolk Artlink offer?

Suffolk Artlink develop and deliver inclusive arts programmes in communities that bring skills, support networks, confidence and joy to people in the East. Their creative projects aim to help people transform their lives through the arts, and are delivered in places including community centres, hospitals and hospices, residential homes, refuges and schools.

Their work is led by experienced arts practitioners, encompassing a rich variety of art forms, and is delivered in close partnership with care, education, voluntary and community organisations. Visit their website to find out more about Forget-me-not Visitors, JumpstART, Clown Round Rock Up and many other fantastic projects [www.suffolkartlink.org.uk](http://www.suffolkartlink.org.uk).

## See work by Suffolk Artlink artists:

Excitingly, Suffolk Artlink have joined Suffolk Open Studios in their own right to open up in June and display some of the work created by people who take part in their projects. Find them in the Directory on page 67.

## Where we are:

Units 13 & 14, Malt Store Annex, The Cut, 8 New Cut, Halesworth, Suffolk, IP19 8BY

01986 873955 | [enquiries@suffolkartlink.org.uk](mailto:enquiries@suffolkartlink.org.uk)

[www.suffolkartlink.org.uk](http://www.suffolkartlink.org.uk)

suffolkartlink



**CAMBRIDGE  
OPEN  
studios** 2018

Download  
the App



You're invited to visit *Cambridge Open Studios* – a free art event this July

- More than 300 artists are taking part in over 200 locations. Explore their studios and meet the people behind the work.
- There's a huge range of art to discover in Cambridge and surrounding villages.
- Download our easy to use app – with info about the artists and directions to their studios. You can start planning your visit today.
- Or pick up our free yellow guidebook from libraries, Tourist Information, galleries, park and ride sites and coffee shops.
- Children are welcome – we want art to be accessible to all.

**Cambridge Open Studios takes place over these weekends: 7th/8th, 14th/15th, 21st/22nd and 28th/29th July from 11am to 6pm**



[www.camopenstudios.co.uk](http://www.camopenstudios.co.uk)



**FELIXSTOWE  
BOOK FESTIVAL**  
27 June - 1 July 2018  
[www.felixstowebookfestival.co.uk](http://www.felixstowebookfestival.co.uk)

Supported by Arts Council England

# Art Competition and Exhibition



8th & 9th September 2018  
Open to all artists and mediums.  
Closing date to enter – 1<sup>st</sup> August.

The prize – a free 3 night stay for 18 family and friends at Bressingham Hall!

## The Bressingham Gardens as Inspiration

Ideally all artists will visit the gardens at Bressingham for inspiration, to create their artwork based on views, plants or wildlife they have seen. Each competition entrant will receive one free visit to The Bressingham Gardens,

FOR ENTRY FORM PLEASE VISIT

[www.thebressinghamgardens.com](http://www.thebressinghamgardens.com)

The  
Bressingham  
Gardens

SPONSORED BY



Suffolk  
OPEN STUDIOS

indigo  
giclée  
FINE ART PRINTING

Professional giclée printing

Beautiful, archival-standard giclée  
prints for fine art and photography.



Indigo Giclee, Spectrum House, Woodhall Business Park,  
Sudbury, Suffolk CO10 1WH | 01787 880 260  
hello@indigogiclee.co.uk

[indigogiclee.co.uk](http://indigogiclee.co.uk)

Suffolk  
OPEN STUDIOS

[www.suffolkopenstudios.org](http://www.suffolkopenstudios.org)

[www.facebook.com/suffolkopenstudios](http://www.facebook.com/suffolkopenstudios)

[www.twitter.com/suffopenstudios](http://www.twitter.com/suffopenstudios)